



ATP DEFENSE

© 2026

H I G H P E R F O R M A N C E

# BACKSHELLS

“SPRING TERMINATION”



[www.atpsavunma.com](http://www.atpsavunma.com) | [info@atpsavunma.com](mailto:info@atpsavunma.com)

ATP company products define several types the standard for highly reliable screened and unscreened termination systems.

Our company provides environment resisting electrically passive components in defence industries, including aerospace, naval and land forces, communication, industrial, medical areas.

We also define innovative solutions a full range of connector series as shown below.

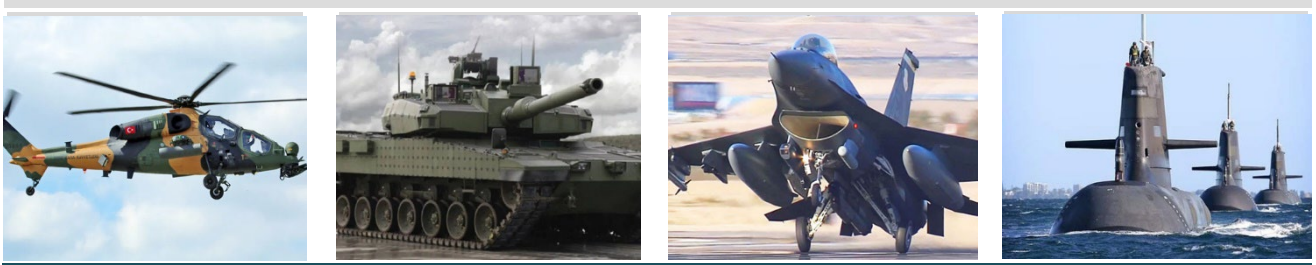
- ❖ MIL-DTL-38999 SERIES I, II, III & IV
- ❖ MIL-DTL-26482 SERIES
- ❖ MIL-DTL-5015 CRIMP SERIES
- ❖ MIL-DTL-5015 (MS3100)
- ❖ MIL-DTL-27599
- ❖ MIL-DTL-83723 SERIES I & III
- ❖ AS81703 SERIES III
- ❖ EN3645

ATP offers its products designed for a wide range of military connectors series.

Our products are available in many configurations for the mating application and easy to install and kitted for customer convenience.

We offer a full range of backshells in different materials and plating.

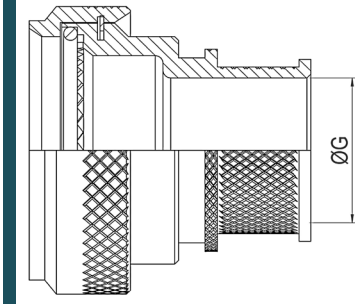
- ❖ ALUMINUM SERIES
- ❖ STAINLESS STEEL SERIES
- ❖ NICKEL ALUMINUM BRONZE SERIES
- ❖ ALUMINUM ELECTROLESS NICKEL
- ❖ ALUMINUM BLACK ANODIZE
- ❖ ALUMINUM ZINC NICKEL OLIVE DRAB OVER ELECTROLESS NICKEL
- ❖ ALUMINUM OLIVE DRAP CADMIUM OVER ELECTROLESS NICKEL
- ❖ ALUMINUM ZINC NICKEL BLACK OVER ELECTROLESS NICKEL



## ENTRY SIZE

How can you determine the Wire Bundle Size (ØG)?

You can calculate with following formula easily.



$$D (\text{ØG}) = 1,2 \sqrt{N_1 \cdot d_1^2 + N_2 \cdot d_2^2 + N_3 \cdot d_3^2 + \dots \infty}$$

D = Bundle diameter (ØG)

N = Number of wires

d = Diameter of wires

## ADAPTER SELECTION

YOU CAN DETERMINE YOUR ENTRY SIZE WITH FOLLOWING FIGURE

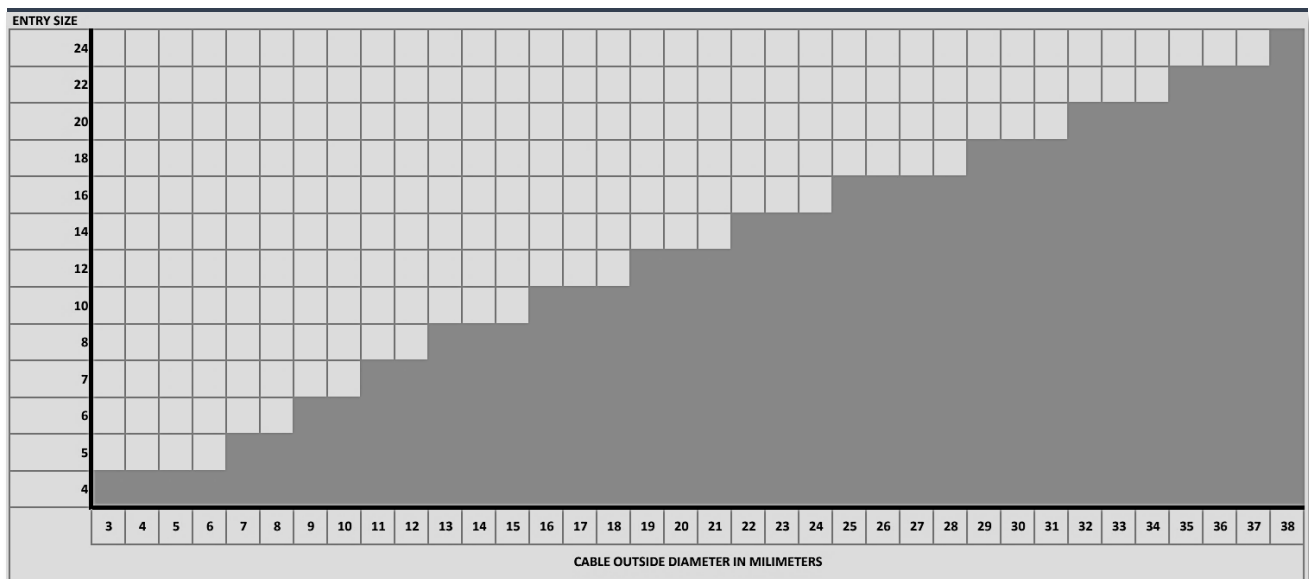


FIGURE: ENTRY SIZE BY CABLE OUTSIDE DIAMETER (IN MM)

## INFORMATION ABOUT ATP ADAPTER FAMILY SPIN COUPLING SHRINK BOOT ADAPTERS

SHIELDED SPIN COUPLING BACKSHELL	
SERIES FOR	ATP BASIC PART NUMBER
❖ MIL-DTL-26482 Series I	<a href="#">ATX16</a> (Page-4)
SERIES FOR	ATP BASIC PART NUMBER
❖ MIL-DTL-26482 Series I ❖ PATT 105 ❖ PATT 603	<a href="#">ATX76</a> (Page-5, 6)
SERIES FOR	ATP BASIC PART NUMBER
❖ MIL-DTL-26482 Series II ❖ AS81703 Series III ❖ MIL-DTL-5015 Crimp ❖ MIL-DTL-83723 Series I & III	<a href="#">ATX82</a> (Page-7, 8)
SERIES FOR	ATP BASIC PART NUMBER
❖ MIL-DTL-38999 Series I & II ❖ MIL-DTL-27599	<a href="#">ATX85</a> (Page-9, 10)
SERIES FOR	ATP BASIC PART NUMBER
❖ MIL-DTL-38999 Series III & IV	<a href="#">ATX88</a> (Page-11, 12)
SERIES FOR	ATP BASIC PART NUMBER
❖ VG96912 Series I	<a href="#">ATX96</a> (Page-13, 14)
SERIES FOR	ATP BASIC PART NUMBER
❖ MIL-DTL-5015 (MS3100)	<a href="#">ATX5015</a> (Page-15, 16)

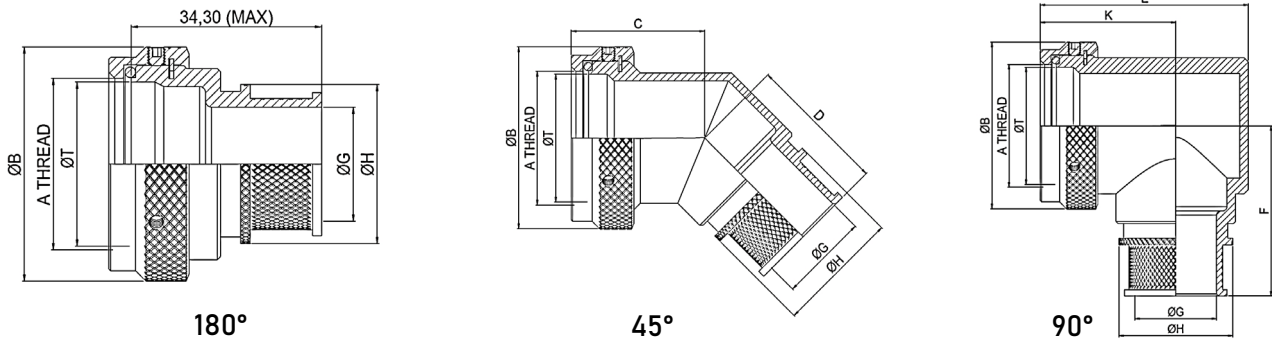
UNSHIELDED SPIN COUPLING BACKSHELL	
SERIES FOR	ATP BASIC PART NUMBER
❖ MIL-DTL-26482 Series I	<a href="#">ATX15</a> (Page-17)
SERIES FOR	ATP BASIC PART NUMBER
❖ MIL-DTL-26482 Series II ❖ AS81703 Series III ❖ MIL-DTL-5015 Crimp ❖ MIL-DTL-83723 Series I & III	<a href="#">ATX60</a> (Page-18)
SERIES FOR	ATP BASIC PART NUMBER
❖ MIL-DTL-38999 Series I & II ❖ MIL-DTL-27599	<a href="#">ATX62</a> (Page-19)
SERIES FOR	ATP BASIC PART NUMBER
❖ MIL-DTL-38999 Series III & IV	<a href="#">ATX69</a> (Page-20)

SOLID (FIXED)* BACKSHELL	
SERIES FOR	ATP BASIC PART NUMBER
❖ MIL-DTL-26482 Series I	<a href="#">ATX10</a> (Page-21)
SERIES FOR	ATP BASIC PART NUMBER
❖ MIL-DTL-26482 Series II ❖ AS81703 Series III ❖ MIL-DTL-5015 Crimp ❖ MIL-DTL-83723 Series I & III	<a href="#">ATX25</a> (Page-22)
SERIES FOR	ATP BASIC PART NUMBER
❖ MIL-DTL-38999 Series I & II ❖ MIL-DTL-27599	<a href="#">ATX30</a> (Page-23)
SERIES FOR	ATP BASIC PART NUMBER
❖ MIL-DTL-38999 Series III & IV	<a href="#">ATX35</a> (Page-24)
SERIES FOR	ATP BASIC PART NUMBER
❖ MIL-DTL-5015 (MS3100)	<a href="#">ATX50</a> (Page-25)

\* Use only straight application.



## ATX16-SPRING TERMINATION SHIELDED BACKSHELL



### DESCRIPTION OF THE PART NUMBER

BASIC SERIES	CONNECTOR INTERFACE	ANGLE	SHELL SIZE	ENTRY SIZE	MATERIAL & PLATING
ATX	16	00	20	12	BA
BASIC CODE	SEE TABLE-1	SEE TABLE-2	SEE TABLE-3	SEE TABLE-4	SEE TABLE-5

TABLE-1 (SERIES FOR)

MIL-DTL-26482 SERIES I

TABLE-2 / ANGLES

CODE	DEFINING FEATURE
00	180° CABLE EXIT
45	45° CABLE EXIT
90	90° CABLE EXIT

TABLE-3 / ATX16 / SHELL SIZE

SHELL SIZE	A THREAD	ØB MAX	ØT MIN	C ±0,5	D ±0,5	E MAX	F MAX	K ±0,5
08	0.437-28 UNEF	19,0	7,0	14,1	24,7	25,2	30,4	17,5
10	0.562-24 UNEF	21,5	9,7	14,9	25,9	28,2	32,2	18,6
12	0.687-24 UNEF	25,0	13,4	15,3	26,3	31,7	33,7	20,5
14	0.812-20 UNEF	28,0	15,8	16,2	27,2	35,2	35,2	22,5
16	0.937-20 UNEF	31,0	18,9	16,5	28,0	38,2	36,9	24,0
18	1.062-18 UNEF	35,0	21,3	17,3	28,3	41,7	38,5	26,0
20	1.187-18 UNEF	37,5	24,5	18,2	29,1	45,2	41,1	28,0
22	1.312-18 UNEF	40,5	27,7	18,5	29,5	48,2	41,6	29,5
24	1.437-18 UNEF	44,0	30,9	19,4	30,4	51,2	43,1	31,0

TABLE-4 / ATX16 / ENTRY SIZE

ENTRY SIZE	ØG MIN	ØH MAX	SPRING REF.	BOOT SIZE	
				STRAIGHT	90°
03	4,77	13,9	HE050	202 K 121	222 K 121
04	6,35	13,9	HE050	202 K 121	222 K 121
05	7,92	15,5	HE100	202 K 121	222 K 121
06	9,52	17,2	HE100	202 K 132	222 K 132
07	11,10	18,7	HE100	202 K 132	222 K 132
08	12,70	20,3	HE200	202 K 132	222 K 132
09	14,27	21,9	HE200	202 K 142	222 K 142
10	15,88	23,5	HE200	202 K 142	222 K 142
11	17,47	25,1	HE200	202 K 142	222 K 142
12	19,05	26,7	HE300	202 K 142	222 K 142
13	20,62	28,3	HE300	202 K 153	222 K 152
14	22,23	29,9	HE300	202 K 153	222 K 152
15	23,82	31,5	HE300	202 K 153	222 K 152
16	25,40	33,1	HE300	202 K 153	222 K 152
17	27,00	34,7	HE400	202 K 163	222 K 163
18	28,60	36,3	HE400	202 K 163	222 K 163
19	30,20	37,9	HE400	202 K 163	222 K 163
20	31,80	39,5	HE400	202 K 163	222 K 163
21	33,38	41,1	HE400	202 K 174	222 K 174
22	35,00	42,7	HE400	202 K 174	222 K 174
23	36,58	44,3	HE400	202 K 174	222 K 174
24	38,10	45,9	HE400	202 K 174	222 K 174

TABLE-5 / MATERIAL & SURFACE PLATING CODES

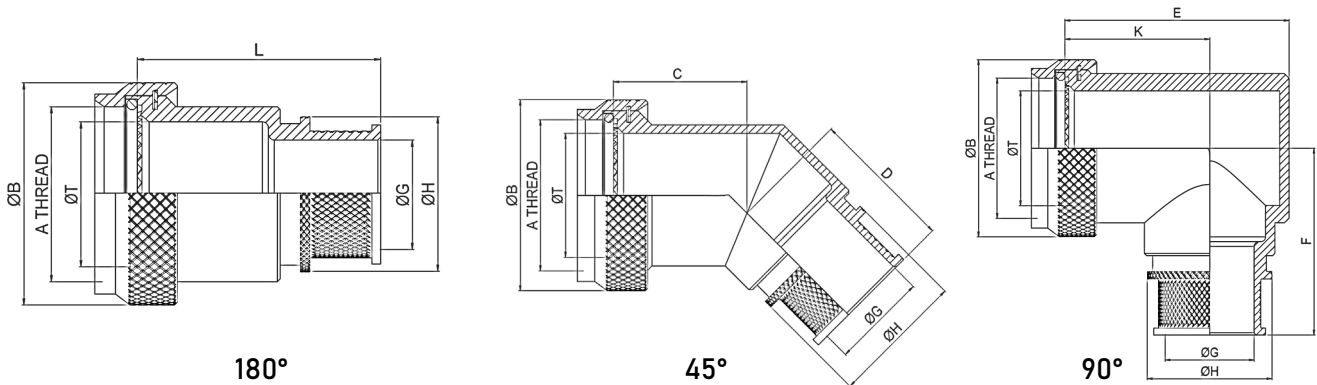
CODE	PLATING
CA	ALUMINUM & ELECTROLESS NICKEL
AA	ALUMINUM & BLACK ANODIZE
BA	ALUMINUM & CADMIUM OLIVE DRAB OVER ELECTROLESS NICKEL
ZN	ALUMINUM & ZINC NICKEL OLIVE DRAB OVER ELECTROLESS NICKEL
ZA	ALUMINUM & ZINC NICKEL BLACK OVER ELECTROLESS NICKEL
PA	ALUMINUM & CADMIUM OLIVE DRAB OVER ELECTROLESS NICKEL, SELECTIVE PLATING
SS	STAINLESS STEEL SERIES & PASSIVATED
NB	NICKEL ALUMINUM BRONZE SERIES

All dimensions are in millimeters (mm).

Specifications and dimensions subject to change.



## ATX76-SPIN COUPLING SHIELDED BACKSHELL



### DESCRIPTION OF THE PART NUMBER

BASIC SERIES	CONNECTOR INTERFACE	ANGLE	SHELL SIZE	ENTRY SIZE	MATERIAL & PLATING	ADDITION
ATX	76	00	16	10	BA	
BASIC CODE	SEE TABLE-1	SEE TABLE-2	SEE TABLE-3	SEE TABLE-4	SEE TABLE-5	SEE TABLE-6

TABLE-1 (SERIES FOR)

MIL-DTL-26482 SERIES I

PATT 105

PATT 603

TABLE-2 / ANGLES

CODE	DEFINING FEATURE
00	180° CABLE EXIT
45	45° CABLE EXIT
90	90° CABLE EXIT

TABLE-3 / ATX76 / SHELL SIZE

SHELL SIZE	A THREAD	ØB MAX	ØT MIN	C MAX	D MAX	E MAX	F MAX	K ±0,5	L MAX
08	0.437-28 UNEF	17,5	6,7	24,3	25,6	30,6	30,4	23,0	36,0
10	0.562-24 UNEF	21,3	9,6	25,1	26,8	34,1	32,1	24,5	36,0
12	0.687-24 UNEF	25,0	13,0	25,5	27,2	37,1	33,6	25,5	36,0
14	0.812-20 UNEF	27,0	15,7	26,4	28,1	40,1	35,1	27,5	36,0
16	0.937-20 UNEF	31,0	18,8	27,1	29,0	43,6	36,8	29,5	36,0
18	1.062-18 UNEF	34,0	21,2	27,5	29,2	47,6	38,4	30,5	36,0
20	1.187-18 UNEF	37,3	24,4	28,3	30,0	50,1	41,0	33,0	36,0
22	1.312-18 UNEF	40,5	27,6	28,7	30,4	53,1	41,5	33,5	36,0
24	1.437-18 UNEF	43,5	30,8	29,6	31,3	56,1	43,1	35,5	36,0

All dimensions are in millimeters (mm). Specifications and dimensions subject to change.



## ATX76-SPIN COUPLING SHIELDED BACKSHELL

TABLE-4 / ATX76 / ENTRY SIZE

ENTRY SIZE	ØG MIN	ØH MAX	SPRING REF.	BOOT SIZE	
				STRAIGHT	90°
03	4,6	13,8	HE050	202 K 121	222 K 121
04	6,2	13,8	HE050	202 K 121	222 K 121
05	7,8	15,4	HE100	202 K 121	222 K 121
06	9,4	17,1	HE100	202 K 132	222 K 132
07	11,0	18,6	HE100	202 K 132	222 K 132
08	12,6	20,2	HE200	202 K 132	222 K 132
09	14,1	21,8	HE200	202 K 142	222 K 142
10	15,7	23,4	HE200	202 K 142	222 K 142
11	17,3	25,0	HE200	202 K 142	222 K 142
12	19,0	26,6	HE300	202 K 142	222 K 142
13	20,5	28,2	HE300	202 K 153	222 K 152
14	22,1	29,8	HE300	202 K 153	222 K 152
15	23,7	31,4	HE300	202 K 153	222 K 152
16	25,4	33,0	HE300	202 K 153	222 K 152
17	27,0	34,6	HE400	202 K 163	222 K 163
18	28,5	36,2	HE400	202 K 163	222 K 163
19	30,1	37,9	HE400	202 K 163	222 K 163
20	31,7	39,4	HE400	202 K 163	222 K 163
21	33,2	41,0	HE400	202 K 174	222 K 174
22	35,0	42,6	HE400	202 K 174	222 K 174
23	36,4	44,2	HE400	202 K 174	222 K 174
24	38,0	45,8	HE400	202 K 174	222 K 174

All dimensions are in millimeters (mm). Specifications and dimensions subject to change.

TABLE-5 / MATERIAL & SURFACE PLATING CODES

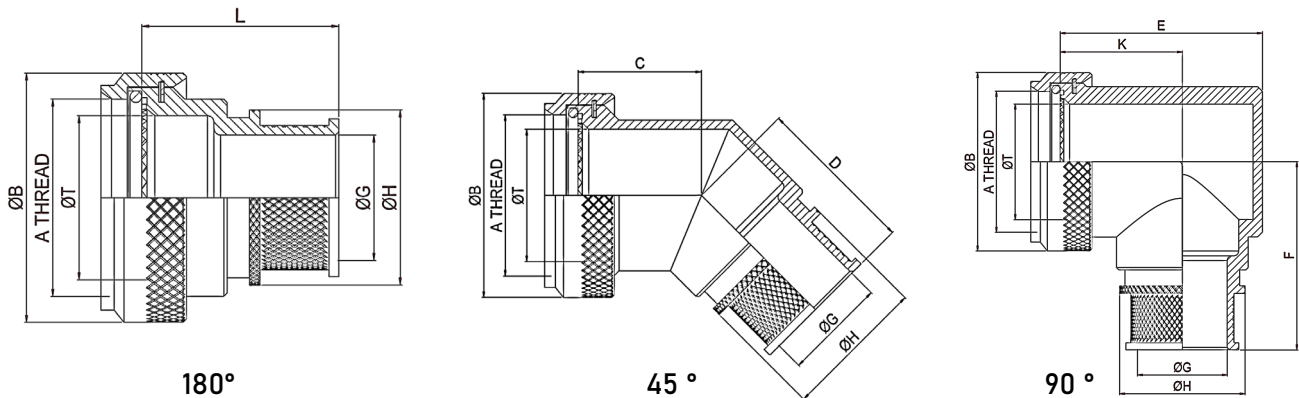
CODE	PLATING
CA	ALUMINUM & ELECTROLESS NICKEL
AA	ALUMINUM & BLACK ANODIZE
BA	ALUMINUM & CADMIUM OLIVE DRAB OVER ELECTROLESS NICKEL
ZN	ALUMINUM & ZINC NICKEL OLIVE DRAB OVER ELECTROLESS NICKEL
ZA	ALUMINUM & ZINC NICKEL BLACK OVER ELECTROLESS NICKEL
PA	ALUMINUM & CADMIUM OLIVE DRAB OVER ELECTROLESS NICKEL, SELECTIVE PLATING
SS	STAINLESS STEEL SERIES & PASSIVATED
NB	NICKEL ALUMINUM BRONZE SERIES

TABLE-6 / ADDITION CODE

CODE	EXPLANATION
S	LOCK WIRE HOLES 3 AT 120° ± 5°
H	HEXAGONAL COUPLING NUT
D	DOUBLE SHIELDED



## ATX82-SPIN COUPLING SHIELDED BACKSHELL



### DESCRIPTION OF THE PART NUMBER

BASIC SERIES	CONNECTOR INTERFACE	ANGLE	SHELL SIZE	ENTRY SIZE	MATERIAL & PLATING	ADDITION
ATX	82	00	16	10	BA	
BASIC CODE	SEE TABLE-1	SEE TABLE-2	SEE TABLE-3	SEE TABLE-4	SEE TABLE-5	SEE TABLE-6

TABLE-1 (SERIES FOR)

MIL-DTL-26482 SERIES II	MIL-DTL-5015 CRIMP
AS81703 SERIES III	MIL-DTL-83723 SERIES I & III

TABLE-2 / ANGLES

CODE	DEFINING FEATURE
00	180° CABLE EXIT
45	45° CABLE EXIT
90	90° CABLE EXIT

TABLE-3 / ATX82 / SHELL SIZE

SHELL SIZE			A THREAD	ØB MAX	ØT +0/-0,25	C MAX	D MAX	E MAX	F MAX	K ±0,5	L ±0,25
MIL-DTL-5015 Crimp	MIL-C-81703 Series III	MIL-DTL-26482 Series II									
-	3	-	0.562-24 UNEF	17,00	6,85	16,7	26,5	26,5	29,3	17,7	30,0
8 & 8S	-	8	0.500-20 UNF	18,50	6,85	16,5	26,3	24,6	30,4	17,4	30,0
10S & 10SL	-	10	0.625-24 UNEF	22,75	9,52	16,7	26,1	26,6	32,1	17,7	30,0
12 & 12S	7	12	0.750-20 UNEF	26,00	12,97	17,2	26,0	29,1	32,0	18,6	30,0
14 & 14S	12	14	0.875-20 UNEF	30,00	14,85	18,0	27,8	30,6	33,5	19,0	30,0
16 & 16S	19	16	1.000-20 UNEF	33,25	18,03	19,0	28,1	34,1	36,8	21,0	30,0
18	27	18	1.062-18 UNEF	34,50	20,04	19,1	29,0	37,1	36,8	23,4	30,0
20	37	20	1.187-18 UNEF	37,30	23,21	20,0	29,2	42,1	38,4	27,0	30,0
22	-	22	1.312-18 UNEF	41,00	26,39	20,2	29,5	44,1	40,0	27,0	30,0
24	-	24	1.437-18 UNEF	43,50	29,31	21,7	31,4	45,1	41,7	27,0	30,0
28	-	-	1.750 UNS	50,00	35,28	23,2	32,0	54,3	45,5	31,3	30,0
32	-	-	2.000-18 UNS	58,00	41,52	25,0	33,6	62,4	48,0	36,3	40,0
36	-	-	2.250-16 UN	64,50	46,99	26,1	34,8	67,3	51,7	38,0	50,0
40	-	-	2.500-16 UN	70,75	52,45	28,5	36,1	73,3	54,7	41,0	50,0
44	-	-	2.750-16 UN	77,00	58,92	30,0	37,7	79,6	58,0	44,1	60,0
48	-	-	3.000-16 UN	83,50	65,27	31,2	39,0	86,0	61,0	47,1	60,0
-	61	-	1.500-18 UNEF	45,40	30,32	22,0	31,3	48,0	52,0	28,0	30,0

All dimensions are in millimeters (mm). Specifications and dimensions subject to change.



## ATX82-SPIN COUPLING SHIELDED BACKSHELL

TABLE-4 / ATX82 / ENTRY SIZE

ENTRY SIZE	ØG MIN	ØH MAX	SPRING REF.	BOOT SIZE	
				STRAIGHT	90°
03	4,6	13,8	HE050	202 K 121	222 K 121
04	6,2	13,8	HE050	202 K 121	222 K 121
05	7,8	15,4	HE100	202 K 121	222 K 121
06	9,4	17,1	HE100	202 K 132	222 K 132
07	11,0	18,6	HE100	202 K 132	222 K 132
08	12,6	20,2	HE200	202 K 132	222 K 132
09	14,1	21,8	HE200	202 K 142	222 K 142
10	15,7	23,4	HE200	202 K 142	222 K 142
11	17,3	25,0	HE200	202 K 142	222 K 142
12	19,0	26,6	HE300	202 K 142	222 K 142
13	20,5	28,2	HE300	202 K 153	222 K 152
14	22,1	29,8	HE300	202 K 153	222 K 152
15	23,7	31,4	HE300	202 K 153	222 K 152
16	25,4	33,0	HE300	202 K 153	222 K 152
17	27,0	34,6	HE400	202 K 163	222 K 163
18	28,5	36,2	HE400	202 K 163	222 K 163
19	30,1	37,9	HE400	202 K 163	222 K 163
20	31,7	39,4	HE400	202 K 163	222 K 163
21	33,2	41,0	HE400	202 K 174	222 K 174
22	35,0	42,6	HE400	202 K 174	222 K 174
23	36,4	44,2	HE400	202 K 174	222 K 174
24	38,0	45,8	HE400	202 K 174	222 K 174

All dimensions are in millimeters (mm). Specifications and dimensions subject to change.

TABLE-5 / MATERIAL & SURFACE PLATING CODES

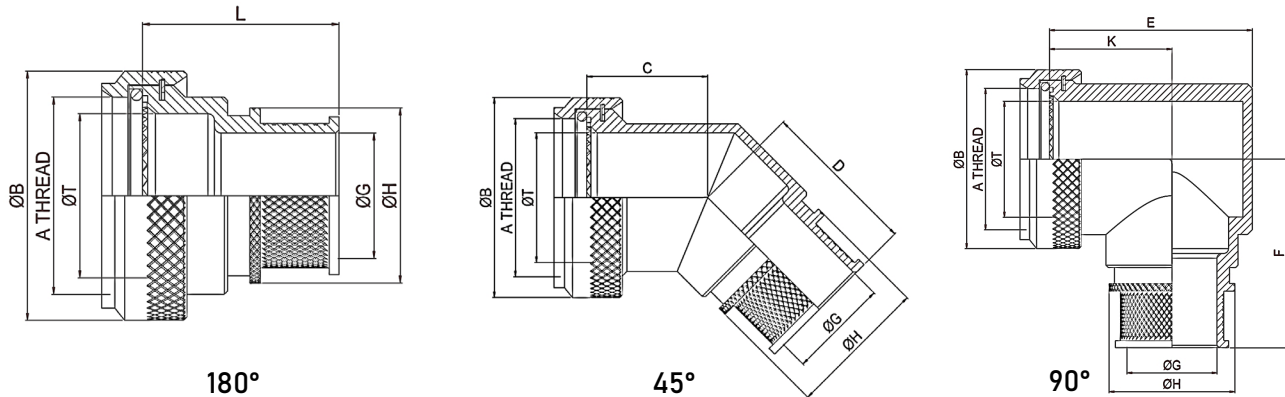
CODE	PLATING
CA	ALUMINUM & ELECTROLESS NICKEL
AA	ALUMINUM & BLACK ANODIZE
BA	ALUMINUM & CADMIUM OLIVE DRAB OVER ELECTROLESS NICKEL
ZN	ALUMINUM & ZINC NICKEL OLIVE DRAB OVER ELECTROLESS NICKEL
ZA	ALUMINUM & ZINC NICKEL BLACK OVER ELECTROLESS NICKEL
PA	ALUMINUM & CADMIUM OLIVE DRAB OVER ELECTROLESS NICKEL, SELECTIVE PLATING
SS	STAINLESS STEEL SERIES & PASSIVATED
NB	NICKEL ALUMINUM BRONZE SERIES

TABLE-6 / ADDITION CODE

CODE	EXPLANATION
S	LOCK WIRE HOLES 3 AT 120° ± 5°
H	HEXAGONAL COUPLING NUT
D	DOUBLE SHIELDED



## ATX85-SPIN COUPLING SHIELDED BACKSHELL



### DESCRIPTION OF THE PART NUMBER

BASIC SERIES	CONNECTOR INTERFACE	ANGLE	SHELL SIZE	ENTRY SIZE	MATERIAL & PLATING	ADDITION
ATX	85	00	17	10	BA	
BASIC CODE	SEE TABLE-1	SEE TABLE-2	SEE TABLE-3	SEE TABLE-4	SEE TABLE-5	SEE TABLE-6

TABLE-1 (SERIES FOR)

MIL-DTL-38999 SERIES I & II

MIL-DTL-27599

TABLE-2 / ANGLES

CODE	DEFINING FEATURE
00	180° CABLE EXIT
45	45° CABLE EXIT
90	90° CABLE EXIT

TABLE-3 / ATX85 / SHELL SIZE

SHELL SIZE		A THREAD	ØB MAX	ØT MIN	C MAX	D MAX	E MAX	F MAX	K ±0,5	L ±0,25
Series I	Series II									
09	08	0.437-28 UNEF	18,30	6,83	16,3	25,6	22,6	30,4	15,0	30,0
11	10	0.562-24 UNEF	22,00	10,21	17,1	26,8	26,1	32,1	16,5	30,0
13	12	0.687-24 UNEF	24,75	13,10	17,5	27,2	29,1	33,6	17,5	30,0
15	14	0.812-20 UNEF	28,30	16,28	18,4	28,1	32,1	35,1	19,5	30,0
17	16	0.937-20 UNEF	29,50	19,45	19,1	29,0	35,6	36,8	21,5	30,0
19	18	1.062-18 UNEF	34,50	21,92	19,5	29,2	39,6	38,4	22,5	30,0
21	20	1.187-18 UNEF	36,75	25,09	20,3	30,0	42,1	41,0	25,0	30,0
23	22	1.312-18 UNEF	41,00	28,27	20,7	30,4	45,1	41,5	25,5	30,0
25	24	1.437-18 UNEF	43,75	31,44	21,6	31,3	48,1	43,1	27,5	30,0

All dimensions are in millimeters (mm). Specifications and dimensions subject to change.



## ATX85-SPIN COUPLING SHIELDED BACKSHELL

**TABLE-4 / ATX85 / ENTRY SIZE**

ENTRY SIZE	ØG MIN	ØH MAX	SPRING REF.	BOOT SIZE	
				STRAIGHT	90°
03	4,6	13,8	HE050	202 K 121	222 K 121
04	6,2	13,8	HE050	202 K 121	222 K 121
05	7,8	15,4	HE100	202 K 121	222 K 121
06	9,4	17,1	HE100	202 K 132	222 K 132
07	11,0	18,6	HE100	202 K 132	222 K 132
08	12,6	20,2	HE200	202 K 132	222 K 132
09	14,1	21,8	HE200	202 K 142	222 K 142
10	15,7	23,4	HE200	202 K 142	222 K 142
11	17,3	25,0	HE200	202 K 142	222 K 142
12	19,0	26,6	HE300	202 K 142	222 K 142
13	20,5	28,2	HE300	202 K 153	222 K 152
14	22,1	29,8	HE300	202 K 153	222 K 152
15	23,7	31,4	HE300	202 K 153	222 K 152
16	25,4	33,0	HE300	202 K 153	222 K 152
17	27,0	34,6	HE400	202 K 163	222 K 163
18	28,5	36,2	HE400	202 K 163	222 K 163
19	30,1	37,9	HE400	202 K 163	222 K 163
20	31,7	39,4	HE400	202 K 163	222 K 163
21	33,2	41,0	HE400	202 K 174	222 K 174
22	35,0	42,6	HE400	202 K 174	222 K 174
23	36,4	44,2	HE400	202 K 174	222 K 174
24	38,0	45,8	HE400	202 K 174	222 K 174

All dimensions are in millimeters (mm). Specifications and dimensions subject to change.

**TABLE-5 / MATERIAL & SURFACE PLATING CODES**

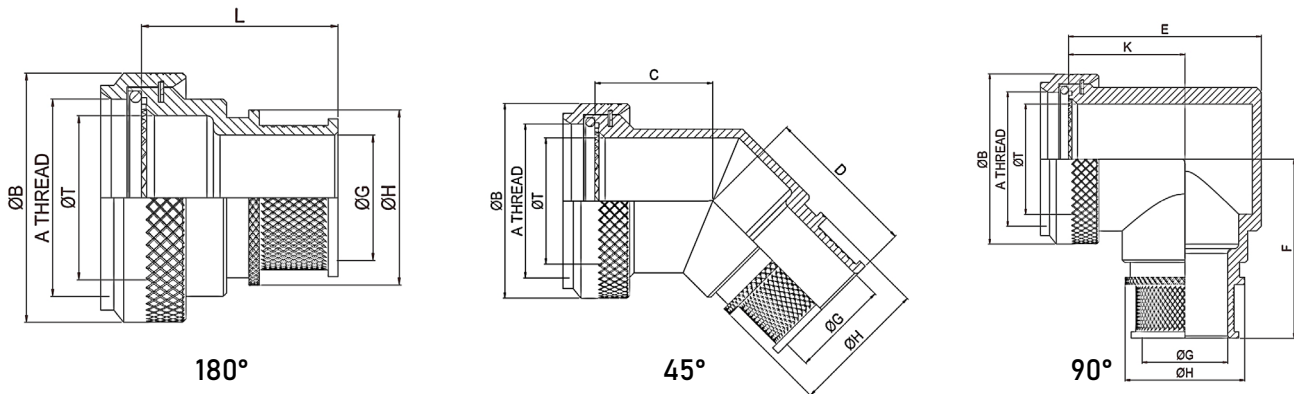
CODE	PLATING
CA	ALUMINUM & ELECTROLESS NICKEL
AA	ALUMINUM & BLACK ANODIZE
BA	ALUMINUM & CADMIUM OLIVE DRAB OVER ELECTROLESS NICKEL
ZN	ALUMINUM & ZINC NICKEL OLIVE DRAB OVER ELECTROLESS NICKEL
ZA	ALUMINUM & ZINC NICKEL BLACK OVER ELECTROLESS NICKEL
PA	ALUMINUM & CADMIUM OLIVE DRAB OVER ELECTROLESS NICKEL, SELECTIVE PLATING
SS	STAINLESS STEEL SERIES & PASSIVATED
NB	NICKEL ALUMINUM BRONZE SERIES

**TABLE-6 / ADDITION CODE**

CODE	EXPLANATION
S	LOCK WIRE HOLES 3 AT 120° ± 5°
H	HEXAGONAL COUPLING NUT
D	DOUBLE SHIELDED



## ATX88-SPIN COUPLING SHIELDED BACKSHELL



### DESCRIPTION OF THE PART NUMBER

BASIC SERIES	CONNECTOR INTERFACE	ANGLE	SHELL SIZE	ENTRY SIZE	MATERIAL & PLATING	ADDITION
ATX	88	00	17	10	BA	
BASIC CODE	SEE TABLE-1	SEE TABLE-2	SEE TABLE-3	SEE TABLE-4	SEE TABLE-5	SEE TABLE-6

TABLE-1 (SERIES FOR)

MIL-DTL-38999 SERIES III & IV  
EN3645

TABLE-2 / ANGLES

CODE	DEFINING FEATURE
00	180° CABLE EXIT
45	45° CABLE EXIT
90	90° CABLE EXIT

TABLE-3 / ATX88 / SHELL SIZE

SHELL SIZE	A THREAD	ØB MAX	ØT MIN	C MAX	D MAX	E MAX	F MAX	K ±0,5	L ±0,25
9 / A	M12 x 1,0	18,30	6,7	13,0	25,6	25,6	30,4	17,4	30,0
11 / B	M15 x 1,0	22,00	9,9	13,8	26,8	26,6	32,1	17,4	30,0
13 / C	M18 x 1,0	24,70	12,8	14,4	27,2	31,1	33,6	20,0	30,0
15 / D	M22 x 1,0	29,25	16,0	15,4	28,1	37,1	35,1	24,5	30,0
17 / E	M25 x 1,0	33,50	19,2	16,0	29,0	40,1	36,8	26,6	30,0
19 / F	M28 x 1,0	35,75	21,4	16,7	29,2	44,6	38,4	27,0	30,0
21 / G	M31 x 1,0	38,25	24,6	17,0	30,0	49,1	40,0	30,3	30,0
23 / H	M34 x 1,0	40,70	27,7	17,6	30,4	51,6	41,5	31,4	30,0
25 / J	M37 x 1,0	43,50	30,9	18,3	31,3	53,1	43,1	28,4	30,0

All dimensions are in millimeters (mm). Specifications and dimensions subject to change.



## ATX88-SPIN COUPLING SHIELDED BACKSHELL

TABLE-4 / ATX88 / ENTRY SIZE

ENTRY SIZE	ØG MIN	ØH MAX	SPRING REF.	BOOT SIZE	
				STRAIGHT	90°
03	4,6	13,8	HE050	202 K 121	222 K 121
04	6,2	13,8	HE050	202 K 121	222 K 121
05	7,8	15,4	HE100	202 K 121	222 K 121
06	9,4	17,1	HE100	202 K 132	222 K 132
07	11,0	18,6	HE100	202 K 132	222 K 132
08	12,6	20,2	HE200	202 K 132	222 K 132
09	14,1	21,8	HE200	202 K 142	222 K 142
10	15,7	23,4	HE200	202 K 142	222 K 142
11	17,3	25,0	HE200	202 K 142	222 K 142
12	19,0	26,6	HE300	202 K 142	222 K 142
13	20,5	28,2	HE300	202 K 153	222 K 152
14	22,1	29,8	HE300	202 K 153	222 K 152
15	23,7	31,4	HE300	202 K 153	222 K 152
16	25,4	33,0	HE300	202 K 153	222 K 152
17	27,0	34,6	HE400	202 K 163	222 K 163
18	28,5	36,2	HE400	202 K 163	222 K 163
19	30,1	37,9	HE400	202 K 163	222 K 163
20	31,7	39,4	HE400	202 K 163	222 K 163
21	33,2	41,0	HE400	202 K 174	222 K 174
22	35,0	42,6	HE400	202 K 174	222 K 174
23	36,4	44,2	HE400	202 K 174	222 K 174
24	38,0	45,8	HE400	202 K 174	222 K 174

All dimensions are in millimeters (mm). Specifications and dimensions subject to change.

TABLE-5 / MATERIAL & SURFACE PLATING CODES

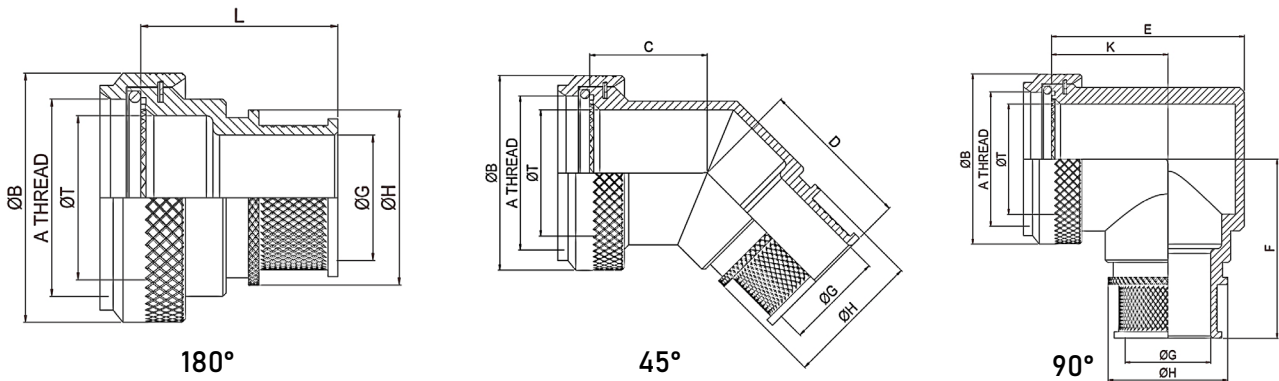
CODE	PLATING
CA	ALUMINUM & ELECTROLESS NICKEL
AA	ALUMINUM & BLACK ANODIZE
BA	ALUMINUM & CADMIUM OLIVE DRAB OVER ELECTROLESS NICKEL
ZN	ALUMINUM & ZINC NICKEL OLIVE DRAB OVER ELECTROLESS NICKEL
ZA	ALUMINUM & ZINC NICKEL BLACK OVER ELECTROLESS NICKEL
PA	ALUMINUM & CADMIUM OLIVE DRAB OVER ELECTROLESS NICKEL, SELECTIVE PLATING
SS	STAINLESS STEEL SERIES & PASSIVATED
NB	NICKEL ALUMINUM BRONZE SERIES

TABLE-6 / ADDITION CODE

CODE	EXPLANATION
S	LOCK WIRE HOLES 3 AT 120° ± 5°
H	HEXAGONAL COUPLING NUT
D	DOUBLE SHIELDED



## ATX96-SPIN COUPLING SHIELDED BACKSHELL



### DESCRIPTION OF THE PART NUMBER

BASIC SERIES	CONNECTOR INTERFACE	ANGLE	SHELL SIZE	ENTRY SIZE	MATERIAL & PLATING	ADDITION
ATX	96	00	14	08	BA	
BASIC CODE	SEE TABLE-1	SEE TABLE-2	SEE TABLE-3	SEE TABLE-4	SEE TABLE-5	SEE TABLE-6

TABLE-1 (SERIES FOR)

VG96912 SERIES I

AMPHENOL SJT SERIES

TABLE-2 / ANGLES

CODE	DEFINING FEATURE
00	180° CABLE EXIT
45	45° CABLE EXIT
90	90° CABLE EXIT

TABLE-3 / ATX96 / SHELL SIZE

ORDER NUMBER	SHELL SIZE				A THREAD	ØB MAX	ØT MIN	C MAX	D MAX	E MAX	F MAX	K ±0,5	L ±0,25
	SJT 00 SJT 06	VG96912 Style A, E, D	SJT 07	VG96912 Style B									
8	8		-		0.437-28UNEF	18,30	6,6	13,0	25,6	25,6	30,4	17,4	30,0
10	10		8		0.562-24UNEF	22,00	10,1	13,8	26,8	26,6	32,1	17,4	30,0
12	12		10		0.687-24UNEF	25,00	13,4	14,4	27,2	31,1	33,6	20,0	30,0
14	14		12		0.812-20UNEF	28,30	16,1	15,4	28,1	37,1	35,1	24,5	30,0
16	16		14		0.937-20UNEF	31,00	19,1	16,0	29,0	40,1	36,8	26,6	30,0
18	18		16		1.062-18UNEF	34,50	21,5	16,7	29,2	44,6	38,4	27,0	30,0
20	20		18		1.187-18UNEF	36,80	25,1	17,0	30,0	49,1	40,0	30,3	30,0
22	22		20		1.312-18UNEF	41,00	27,4	17,6	30,4	51,6	41,5	31,4	30,0
24	24		22		1.437-18UNEF	43,75	30,4	18,3	31,3	53,1	43,1	28,4	30,0

All dimensions are in millimeters (mm). Specifications and dimensions subject to change.



## ATX96-SPIN COUPLING SHIELDED BACKSHELL

**TABLE-4 / ATX96 / ENTRY SIZE**

ENTRY SIZE	ØG MIN	ØH MAX	SPRING REF.	BOOT SIZE	
				STRAIGHT	90°
03	4,6	13,8	HE050	202 K 121	222 K 121
04	6,2	13,8	HE050	202 K 121	222 K 121
05	7,8	15,4	HE100	202 K 121	222 K 121
06	9,4	17,1	HE100	202 K 132	222 K 132
07	11,0	18,6	HE100	202 K 132	222 K 132
08	12,6	20,2	HE200	202 K 132	222 K 132
09	14,1	21,8	HE200	202 K 142	222 K 142
10	15,7	23,4	HE200	202 K 142	222 K 142
11	17,3	25,0	HE200	202 K 142	222 K 142
12	19,0	26,6	HE300	202 K 142	222 K 142
13	20,5	28,2	HE300	202 K 153	222 K 152
14	22,1	29,8	HE300	202 K 153	222 K 152
15	23,7	31,4	HE300	202 K 153	222 K 152
16	25,4	33,0	HE300	202 K 153	222 K 152
17	27,0	34,6	HE400	202 K 163	222 K 163
18	28,5	36,2	HE400	202 K 163	222 K 163
19	30,1	37,9	HE400	202 K 163	222 K 163
20	31,7	39,4	HE400	202 K 163	222 K 163
21	33,2	41,0	HE400	202 K 174	222 K 174
22	35,0	42,6	HE400	202 K 174	222 K 174
23	36,4	44,2	HE400	202 K 174	222 K 174
24	38,0	45,8	HE400	202 K 174	222 K 174

All dimensions are in millimeters (mm). Specifications and dimensions subject to change.

**TABLE-5 / MATERIAL & SURFACE PLATING CODES**

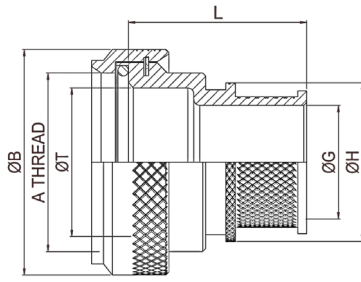
CODE	PLATING
CA	ALUMINUM & ELECTROLESS NICKEL
AA	ALUMINUM & BLACK ANODIZE
BA	ALUMINUM & CADMIUM OLIVE DRAB OVER ELECTROLESS NICKEL
ZN	ALUMINUM & ZINC NICKEL OLIVE DRAB OVER ELECTROLESS NICKEL
ZA	ALUMINUM & ZINC NICKEL BLACK OVER ELECTROLESS NICKEL
PA	ALUMINUM & CADMIUM OLIVE DRAB OVER ELECTROLESS NICKEL, SELECTIVE PLATING
SS	STAINLESS STEEL SERIES & PASSIVATED
NB	NICKEL ALUMINUM BRONZE SERIES

**TABLE-6 / ADDITION CODE**

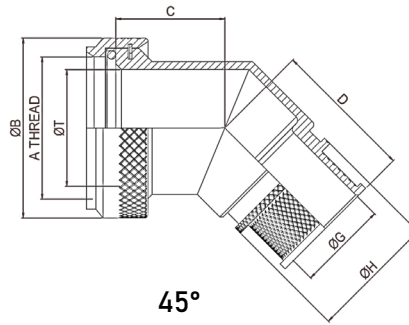
CODE	EXPLANATION
S	LOCK WIRE HOLES 3 AT 120° ± 5°
H	HEXAGONAL COUPLING NUT
D	DOUBLE SHIELDED



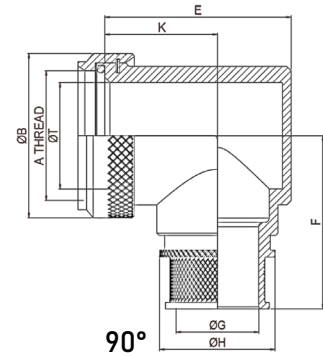
## ATX5015-SPIN COUPLING SHIELDED BACKSHELL



180°



45°



90°

### DESCRIPTION OF THE PART NUMBER

BASIC SERIES	CONNECTOR INTERFACE	MANUFACTURER CODE	ANGLE	SHELL SIZE	ENTRY SIZE	MATERIAL & PLATING	ADDITION
ATX	5015	C	00	20	12	BA	
BASIC CODE	SEE TABLE-1	SEE TABLE-2	SEE TABLE-3	SEE TABLE-4	SEE TABLE-5	SEE TABLE-6	SEE TABLE-7

TABLE-1 (SERIES FOR)

MIL-DTL-5015 (MS3100)

TABLE-3 / ANGLES

CODE	DEFINING FEATURE
00	180° CABLE EXIT
45	45° CABLE EXIT
90	90° CABLE EXIT

TABLE-2 / MANUFACTURER

MANUFACTURER CODE	CONNECTOR MANUFACTURER
A	AMPHENOL-Class A
B	BENDIX-Class A/E/R
C	CANNON-Class A/E/R
D	UNKOWN-Class A/E/R
R	AMPHENOL-Class R
-	Manufacturer code not required

TABLE-4 / ATX5015 / SHELL SIZE

ORDER NUMBER	SHELL SIZE	MANUFACTURER CODE	A THREAD	ØB MAX	ØT MIN	C ±0,5	D MAX	E MAX	F MAX	K ±0,5	L MAX
08	8S	B	0.375-37 UNEF	20,3	7,9	15,0	25,3	22,2	30,2	15,2	18,0
08	8S	C	0.437-28 UNEF	20,3	7,9	15,0	25,3	22,2	30,2	15,2	18,0
08	8S	A, R	0.437-27 UNS	20,3	7,9	15,0	25,3	22,2	30,2	15,2	18,0
08	8S	D	*	20,3	7,9	15,0	25,3	22,2	30,2	15,2	18,0
10	10S	-	0.500-28 UNEF	22,0	9,4	15,4	25,6	23,7	32,2	15,7	19,5
10SL	10SL	C	0.562-24 UNEF	25,0	12,7	18,4	26,4	27,7	33,7	17,5	23,0
10SL	10SL	A, B, R	0.625-24 UNEF	25,0	12,7	18,4	26,4	27,7	33,7	17,5	23,0
10SL	10SL	D	*	25,0	12,7	18,4	26,4	27,7	33,7	17,5	23,0
12	12 & 12S	B, C	0.625-24 UNEF	27,0	12,7	18,4	26,4	27,7	33,7	17,5	23,0
12	12 & 12S	A, R	0.687-24 UNEF	27,0	12,7	18,4	26,4	27,7	33,7	17,5	23,0
12	12 & 12S	D	*	27,0	12,7	18,4	26,4	27,7	33,7	17,5	23,0
14	14 & 14S	-	0.750-20 UNEF	28,5	15,9	19,3	27,3	31,2	35,2	19,5	26,0
16	16 & 16S	-	0.875-20 UNEF	31,5	18,9	20,0	28,0	34,7	36,9	21,5	30,5
18	18	-	1.000-20 UNEF	35,0	20,6	20,6	28,6	37,7	38,5	23,0	34,0
20	20	A, B, C	1.125-18 UNEF	38,0	25,3	21,3	29,3	41,2	41,1	24,5	37,0
20	20	R	1.125-24 UNS	38,0	25,3	21,3	29,3	41,2	41,1	24,5	37,0
20	20	D	*	38,0	25,3	21,3	29,3	41,2	41,1	24,5	37,0
22	22	-	1.250-18 UNEF	41,0	28,4	21,9	29,9	44,2	41,6	26,0	40,0
24	24	-	1.375-18 UNEF	43,5	31,7	22,5	30,6	47,2	43,1	27,5	43,5
28	28	-	1.625-18 UNEF	50,5	34,9	23,6	31,3	52,2	45,5	30,0	50,0
32	32	B, C	1.875-16 UN	58,0	41,4	24,9	32,7	58,9	48,0	32,7	56,0
32	32	A, R	1.906-18 UN	58,0	41,4	24,9	32,7	58,9	48,0	32,7	56,0
32	32	D	*	58,0	41,4	24,9	32,7	58,9	48,0	32,7	56,0
36	36	B	2.062-16 UNS	63,5	47,9	27,5	33,7	68,2	-	38,0	64,0
36	36	R	2.062-20 UNS	63,5	47,9	27,5	33,7	68,2	-	38,0	64,0
36	36	C	2.125-16 UN	63,5	47,9	27,5	33,7	68,2	-	38,0	64,0
36	36	A	2.125-18 UNS	63,5	47,9	27,5	33,7	68,2	-	38,0	64,0
36	36	D	*	63,5	47,9	27,5	33,7	68,2	-	38,0	64,0
40	40	B	2.312-16 UNS	70,0	53,9	30,1	-	72,7	-	41,1	69,5
40	40	A, C, R	2.375-16 UN	70,0	53,9	30,1	-	72,7	-	41,1	69,5
40	40	D	*	70,0	53,9	30,1	-	72,7	-	41,1	69,5

1) All dimensions are in millimeters (mm). Specifications and dimensions subject to change.

2) Manufacturer code D (\*)

Additional pieces supplied when manufacturer is unknown. All thread sizes for order number apply.



## ATX5015-SPIN COUPLING SHIELDED BACKSHELL

**TABLE-5 / ATX5015 / ENTRY SIZE**

ENTRY SIZE	ØG MIN	ØH MAX	SPRING REF.	BOOT SIZE	
				STRAIGHT	90°
03	4,77	13,9	HE050	202 K 121	222 K 121
04	6,35	13,9	HE050	202 K 121	222 K 121
05	7,92	15,5	HE100	202 K 121	222 K 121
06	9,52	17,2	HE100	202 K 132	222 K 132
07	11,10	18,7	HE100	202 K 132	222 K 132
08	12,70	20,3	HE200	202 K 132	222 K 132
09	14,27	21,9	HE200	202 K 142	222 K 142
10	15,88	23,5	HE200	202 K 142	222 K 142
11	17,47	25,1	HE200	202 K 142	222 K 142
12	19,05	26,7	HE300	202 K 142	222 K 142
13	20,62	28,3	HE300	202 K 153	222 K 152
14	22,23	29,9	HE300	202 K 153	222 K 152
15	23,82	31,5	HE300	202 K 153	222 K 152
16	25,40	33,1	HE300	202 K 153	222 K 152
17	27,00	34,7	HE400	202 K 163	222 K 163
18	28,60	36,3	HE400	202 K 163	222 K 163
19	30,20	37,9	HE400	202 K 163	222 K 163
20	31,80	39,5	HE400	202 K 163	222 K 163
21	33,38	41,1	HE400	202 K 174	222 K 174
22	35,00	42,7	HE400	202 K 174	222 K 174
23	36,58	44,3	HE400	202 K 174	222 K 174
24	38,10	45,9	HE400	202 K 174	222 K 174

All dimensions are in millimeters (mm). Specifications and dimensions subject to change.

**TABLE-6 / MATERIAL & SURFACE PLATING CODES**

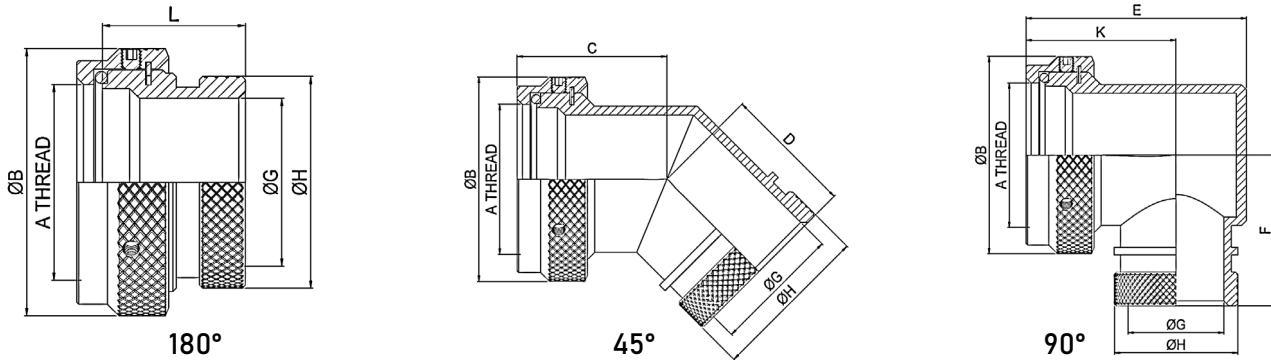
CODE	PLATING
CA	ALUMINUM & ELECTROLESS NICKEL
AA	ALUMINUM & BLACK ANODIZE
BA	ALUMINUM & CADMIUM OLIVE DRAB OVER ELECTROLESS NICKEL
ZN	ALUMINUM & ZINC NICKEL OLIVE DRAB OVER ELECTROLESS NICKEL
ZA	ALUMINUM & ZINC NICKEL BLACK OVER ELECTROLESS NICKEL
PA	ALUMINUM & CADMIUM OLIVE DRAB OVER ELECTROLESS NICKEL, SELECTIVE PLATING
SS	STAINLESS STEEL SERIES & PASSIVATED
NB	NICKEL ALUMINUM BRONZE SERIES

**TABLE-7 / ADDITION CODE**

CODE	EXPLANATION
S	LOCK WIRE HOLES 3 AT 120° ± 5°
H	HEXAGONAL COUPLING NUT
D	DOUBLE SHIELDED



## ATX15-SPIN COUPLING UNSHIELDED BACKSHELL



### DESCRIPTION OF THE PART NUMBER

BASIC SERIES	CONNECTOR INTERFACE	ANGLE	SHELL SIZE	MATERIAL & PLATING	ADDITION
ATX	15	00	17	BA	
BASIC CODE	SEE TABLE-1	SEE TABLE-2	SEE TABLE-3	SEE TABLE-4	SEE TABLE-5

**TABLE-1 (SERIES FOR)**

MIL-DTL-26482 SERIES I

**TABLE-2 / ANGLES**

CODE	DEFINING FEATURE
00	180° CABLE EXIT
45	45° CABLE EXIT
90	90° CABLE EXIT

**TABLE-3 / ATX15 / SHELL SIZE**

SHELL SIZE	A THREAD	ØB MAX	ØG MIN	ØH MAX	C MAX	D MAX	E MAX	F MAX	K MAX	L MAX	BOOT SIZE	
											STRAIGHT	90°
09	0.437-28 UNEF	18,0	6,7	13,4	16,3	17,7	22,6	25,4	15,0	21,0	202 K 121	222 K 121
11	0.562-24 UNEF	21,0	10,1	15,3	17,1	18,5	26,1	27,2	17,0	21,0	202 K 132	222 K 132
13	0.687-24 UNEF	24,4	13,0	19,6	17,5	19,2	29,1	28,6	18,0	21,0	202 K 132	222 K 132
15	0.812-20 UNEF	27,0	16,1	21,2	18,4	19,5	32,1	30,1	20,0	21,0	202 K 142	222 K 142
17	0.937-20 UNEF	30,7	19,2	24,4	19,1	20,4	35,6	31,9	21,4	21,0	202 K 142	222 K 142
19	1.062-18 UNEF	34,0	22,2	26,4	19,5	20,7	39,7	33,4	23,0	21,0	202 K 153	222 K 152
21	1.187-18 UNEF	37,2	25,7	31,0	20,3	21,5	42,1	35,1	25,0	21,0	202 K 153	222 K 152
23	1.312-18 UNEF	41,0	28,2	34,3	20,7	22,4	45,1	36,7	26,0	21,0	202 K 163	222 K 163
25	1.437-18 UNEF	43,6	31,4	36,5	21,6	22,8	48,1	38,0	28,0	21,0	202 K 163	222 K 163

All dimensions are in millimeters (mm). Specifications and dimensions subject to change.

**TABLE-4 / MATERIAL & SURFACE PLATING CODES**

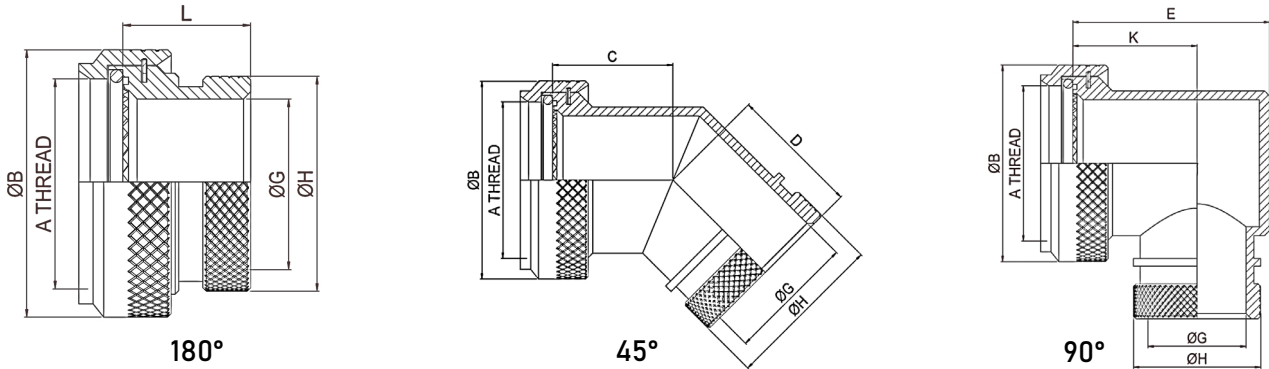
CODE	PLATING
CA	ALUMINUM & ELECTROLESS NICKEL
AA	ALUMINUM & BLACK ANODIZE
BA	ALUMINUM & CADMIUM OLIVE DRAB OVER ELECTROLESS NICKEL
ZN	ALUMINUM & ZINC NICKEL OLIVE DRAB OVER ELECTROLESS NICKEL
ZA	ALUMINUM & ZINC NICKEL BLACK OVER ELECTROLESS NICKEL
PA	ALUMINUM & CADMIUM OLIVE DRAB OVER ELECTROLESS NICKEL, SELECTIVE PLATING
SS	STAINLESS STEEL SERIES & PASSIVATED
NB	NICKEL ALUMINUM BRONZE SERIES

**TABLE-5 / ADDITION CODE**

CODE	EXPLANATION
H	HEXAGONAL COUPLING NUT



## ATX60-SPIN COUPLING UNSHIELDED BACKSHELL



### DESCRIPTION OF THE PART NUMBER

BASIC SERIES	CONNECTOR INTERFACE	ANGLE	SHELL SIZE	MATERIAL & PLATING	ADDITION
ATX	60	00	16	BA	
BASIC CODE	SEE TABLE-1	SEE TABLE-2	SEE TABLE-3	SEE TABLE-4	SEE TABLE-5

**TABLE-1 (SERIES FOR)**

MIL-DTL-26482 SERIES II AS81703 SERIES III	MIL-DTL-5015 CRIMP MIL-DTL-83723 SERIES I & III
---	--

**TABLE-2 / ANGLES**

CODE	DEFINING FEATURE
00	180° CABLE EXIT
45	45° CABLE EXIT
90	90° CABLE EXIT

**TABLE-3 / ATX60 / SHELL SIZE**

SHELL SIZE			A THREAD	ØB MAX	ØG -0,25	ØH MAX	C MAX	D MAX	E MAX	F MAX	K MAX	L MAX	BOOT SIZE	
MIL-DTL-5015 Crimp	MIL-C-81703 Series III	MIL-DTL-26482 Series II											STRAIGHT	90°
-	3	-	0.562-24 UNEF	17,00	6,85	13,8	16,4	18,0	26,5	26,0	17,9	21,0	202 K 121	222 K 121
8 & 8S	-	8	0.500-20 UNEF	18,50	6,85	13,8	16,2	17,8	24,6	25,6	17,6	21,0	202 K 121	222 K 121
10, 10S & 10SL	-	10	0.625-24 UNEF	22,75	9,52	15,4	16,4	18,6	26,6	27,3	17,9	21,0	202 K 132	222 K 132
12 & 12S	7	12	0.750-20 UNEF	26,00	12,97	19,7	16,9	19,0	29,1	28,8	18,9	21,0	202 K 132	222 K 132
14 & 14S	12	14	0.875-20 UNEF	30,00	14,85	21,3	17,7	19,3	30,6	30,3	19,2	21,0	202 K 142	222 K 142
16 & 16S	19	16	1.000-20 UNEF	33,25	18,03	24,5	18,6	20,1	34,1	30,3	21,2	21,0	202 K 142	222 K 142
18	27	18	1.062-18 UNEF	34,50	20,04	26,5	18,8	20,9	37,1	32,0	23,6	21,0	202 K 153	222 K 152
20	37	20	1.187-18 UNEF	37,30	23,21	30,9	19,7	21,2	42,1	33,6	27,0	21,0	202 K 153	222 K 152
22	-	22	1.312-18 UNEF	41,00	26,39	34,4	19,9	22,0	44,1	35,0	27,0	21,0	202 K 163	222 K 163
24	-	24	1.437-18 UNEF	43,50	29,31	36,7	21,4	22,4	45,1	36,7	27,0	21,0	202 K 163	222 K 163
28	-	-	1.750-18 UNS	50,00	35,28	43,4	22,9	23,4	54,4	41,4	31,5	21,0	202 K 174	222 K 174
32	-	-	2.000-18 UNS	58,00	41,52	48,7	24,6	25,1	62,6	44,7	36,5	25,0	202 K 174	222 K 174
36	-	-	2.250-16 UN	64,50	46,99	55,0	25,8	26,3	67,4	47,9	38,2	25,0	202 K 185	222 K 185
40	-	-	2.500-16 UN	70,75	52,45	61,0	28,2	27,5	73,3	50,9	42,6	25,0	202 K 185	222 K 185
44	-	-	2.750-16 UN	77,00	58,92	67,5	29,7	29,2	79,6	54,1	-	25,0	202 A 196	222 A 196
48	-	-	3.000-16 UN	83,50	65,27	73,8	30,9	30,4	86,0	57,0	-	25,0	202 A 196	222 A 196
-	61	-	1.500-18 UNEF	45,40	30,32	38,7	22,2	22,8	48,0	38,2	28,2	21,0	202 K 163	222 K 163

All dimensions are in millimeters (mm). Specifications and dimensions subject to change.

**TABLE-4 / MATERIAL & SURFACE PLATING CODES**

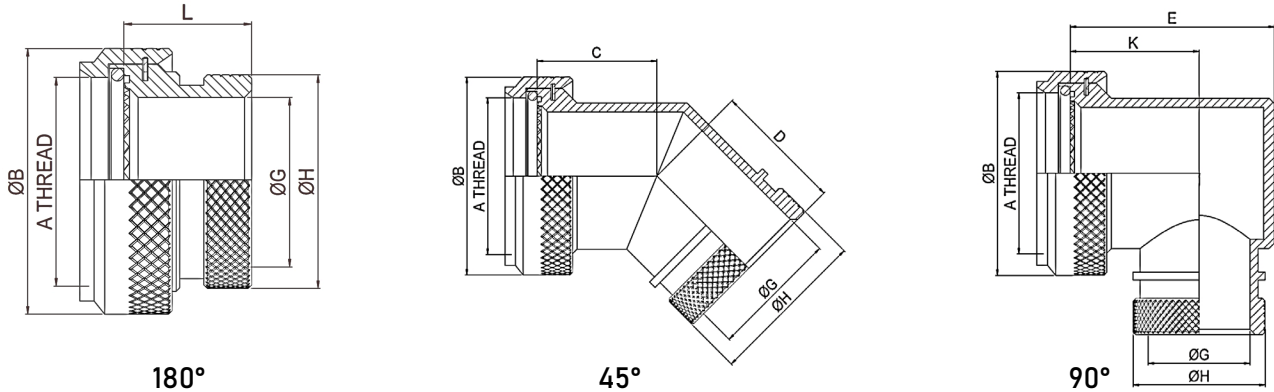
CODE	PLATING
CA	ALUMINUM & ELECTROLESS NICKEL
AA	ALUMINUM & BLACK ANODIZE
BA	ALUMINUM & CADMIUM OLIVE DRAB OVER ELECTROLESS NICKEL
ZN	ALUMINUM & ZINC NICKEL OLIVE DRAB OVER ELECTROLESS NICKEL
ZA	ALUMINUM & ZINC NICKEL BLACK OVER ELECTROLESS NICKEL
PA	ALUMINUM & CADMIUM OLIVE DRAB OVER ELECTROLESS NICKEL, SELECTIVE PLATING
SS	STAINLESS STEEL SERIES & PASSIVATED
NB	NICKEL ALUMINUM BRONZE SERIES

**TABLE-5 / ADDITION CODE**

CODE	EXPLANATION
S	LOCK WIRE HOLES 3 AT 120° ± 5°
H	HEXAGONAL COUPLING NUT



## ATX62-SPIN COUPLING UNSHIELDED BACKSHELL



### DESCRIPTION OF THE PART NUMBER

BASIC SERIES	CONNECTOR INTERFACE	ANGLE	SHELL SIZE	MATERIAL & PLATING	ADDITION
ATX	62	00	17	BA	S
BASIC CODE	SEE TABLE-1	SEE TABLE-2	SEE TABLE-3	SEE TABLE-4	SEE TABLE-6

**TABLE-1 (SERIES FOR)**

MIL-DTL-38999 SERIES I & II  
MIL-DTL-27599

**TABLE-2 / ANGLES**

CODE	DEFINING FEATURE
00	180° CABLE EXIT
45	45° CABLE EXIT
90	90° CABLE EXIT

**TABLE-3 / ATX62 / SHELL SIZE**

SHELL SIZE		A THREAD	ØB MAX	ØG MIN	ØH MAX	C MAX	D MAX	E MAX	F MAX	K MAX	L MAX	BOOT SIZE	
Series I	Series II											STRAIGHT	90°
09	08	0.437-28 UNEF	18,30	6,83	13,4	16,3	17,7	22,6	25,4	15,0	21,0	202 K 121	222 K 121
11	10	0.562-24 UNEF	22,00	10,21	15,3	17,1	18,5	26,1	27,2	17,0	21,0	202 K 132	222 K 132
13	12	0.687-24 UNEF	24,75	13,10	19,6	17,5	19,2	29,1	28,6	18,0	21,0	202 K 142	222 K 142
15	14	0.812-20 UNEF	28,30	16,28	21,2	18,4	19,5	32,1	30,1	20,0	21,0	202 K 142	222 K 142
17	16	0.937-20 UNEF	29,50	19,45	24,4	19,1	20,4	35,6	31,9	21,4	21,0	202 K 153	222 K 152
19	18	1.062-18 UNEF	34,50	21,92	26,4	19,5	20,7	39,7	33,4	23,0	21,0	202 K 153	222 K 152
21	20	1.187-18 UNEF	36,75	25,09	31,0	20,3	21,5	42,1	35,1	25,0	21,0	202 K 153	222 K 152
23	22	1.312-18 UNEF	41,00	28,27	34,3	20,7	22,4	45,1	36,7	26,0	21,0	202 K 163	222 K 163
25	24	1.437-18 UNEF	43,75	31,44	36,5	21,6	22,8	48,1	38,0	28,0	21,0	202 K 163	222 K 163

All dimensions are in millimeters (mm). Specifications and dimensions subject to change.

**TABLE-4 / MATERIAL & SURFACE PLATING CODES**

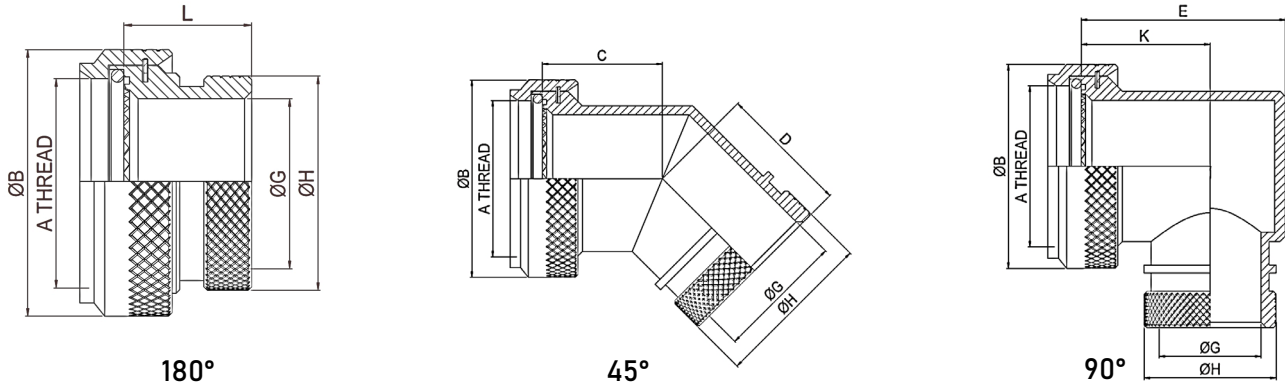
CODE	PLATING
CA	ALUMINUM & ELECTROLESS NICKEL
AA	ALUMINUM & BLACK ANODIZE
BA	ALUMINUM & CADMIUM OLIVE DRAB OVER ELECTROLESS NICKEL
ZN	ALUMINUM & ZINC NICKEL OLIVE DRAB OVER ELECTROLESS NICKEL
ZA	ALUMINUM & ZINC NICKEL BLACK OVER ELECTROLESS NICKEL
PA	ALUMINUM & CADMIUM OLIVE DRAB OVER ELECTROLESS NICKEL, SELECTIVE PLATING
SS	STAINLESS STEEL SERIES & PASSIVATED
NB	NICKEL ALUMINUM BRONZE SERIES

**TABLE-5 / ADDITION CODE**

CODE	EXPLANATION
S	LOCK WIRE HOLES 3 AT 120°±5°
H	HEXAGONAL COUPLING NUT



## ATX69-SPIN COUPLING UNSHIELDED BACKSHELL



### DESCRIPTION OF THE PART NUMBER

BASIC SERIES	CONNECTOR INTERFACE	ANGLE	SHELL SIZE	MATERIAL & PLATING	ADDITION
ATX	69	00	17	BA	
BASIC CODE	SEE TABLE-1	SEE TABLE-2	SEE TABLE-3	SEE TABLE-4	SEE TABLE-5

**TABLE-1 (SERIES FOR)**

MIL-DTL-38999 SERIES III & IV  
EN3645

**TABLE-2 / ANGLES**

CODE	DEFINING FEATURE
00	180° CABLE EXIT
45	45° CABLE EXIT
90	90° CABLE EXIT

**TABLE-3 / ATX69 / SHELL SIZE**

SHELL SIZE	A THREAD	ØB MAX	ØG MIN	ØH MAX	C MAX	D MAX	E MAX	F MAX	K MAX	L MAX	BOOT SIZE	
											STRAIGHT	90°
9 / A	M12 x 1,0	18,30	6,7	13,4	13,0	17,5	25,6	25,4	17,4	21,0	202 K 121	222 K 121
11 / B	M15 x 1,0	22,00	9,9	15,3	13,8	18,3	26,6	27,2	17,4	21,0	202 K 132	222 K 132
13 / C	M18 x 1,0	24,70	12,8	19,6	14,4	19,3	31,1	28,6	20,0	21,0	202 K 142	222 K 142
15 / D	M22 x 1,0	29,25	16,0	21,2	15,4	19,5	37,1	30,1	24,5	21,0	202 K 142	222 K 142
17 / E	M25 x 1,0	33,50	19,2	24,3	16,0	20,3	40,1	31,9	26,6	21,0	202 K 142	222 K 142
19 / F	M28 x 1,0	35,75	21,4	26,4	16,7	20,7	44,6	33,4	27,0	21,0	202 K 153	222 K 152
21 / G	M31 x 1,0	38,25	24,6	31,0	17,0	21,5	49,1	35,0	30,4	21,0	202 K 153	222 K 152
23 / H	M34 x 1,0	40,70	27,7	34,3	17,6	22,4	51,6	36,6	31,4	21,0	202 K 163	222 K 163
25 / J	M37 x 1,0	43,50	30,9	36,5	18,4	22,8	53,1	38,0	28,4	21,0	202 K 163	222 K 163

All dimensions are in millimeters (mm). Specifications and dimensions subject to change.

**TABLE-4 / MATERIAL & SURFACE PLATING CODES**

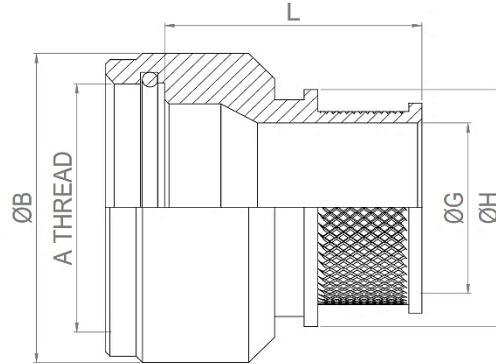
CODE	PLATING
CA	ALUMINUM & ELECTROLESS NICKEL
AA	ALUMINUM & BLACK ANODIZE
BA	ALUMINUM & CADMIUM OLIVE DRAB OVER ELECTROLESS NICKEL
ZN	ALUMINUM & ZINC NICKEL OLIVE DRAB OVER ELECTROLESS NICKEL
ZA	ALUMINUM & ZINC NICKEL BLACK OVER ELECTROLESS NICKEL
PA	ALUMINUM & CADMIUM OLIVE DRAB OVER ELECTROLESS NICKEL, SELECTIVE PLATING
SS	STAINLESS STEEL SERIES & PASSIVATED
NB	NICKEL ALUMINUM BRONZE SERIES

**TABLE-5 / ADDITION CODE**

CODE	EXPLANATION
S	LOCK WIRE HOLES 3 AT 120° ± 5°
H	HEXAGONAL COUPLING NUT



## ATX10-SOLID (FIXED) BACKSHELL



### DESCRIPTION OF THE PART NUMBER

BASIC SERIES	CONNECTOR INTERFACE	SHELL SIZE	MATERIAL & PLATING	MODIFICATION CODE	ADDITION
ATX	10	17	BA		
BASIC CODE	SEE TABLE-1	SEE TABLE-2	SEE TABLE-3	SEE TABLE-4	SEE TABLE-5

**TABLE-1 (SERIES FOR)**

MIL-DTL-26482 SERIES I

**TABLE-2 / ATX10 / SHELL SIZE**

BASE PART NUMBER	SHELL SIZE	A THREAD	ØB MAX	ØG MIN	ØH MAX	L MAX	BOOT SIZE	
							STRAIGHT	90°
ATX10-08	8	0.437-28 UNEF	17,4	6,4	11,1	38,0	202 K 121	222 K 121
ATX10-10	10	0.562-24 UNEF	20,4	7,9	12,7	38,0	202 K 121	222 K 121
ATX10-12	12	0.687-24 UNEF	23,4	11,1	15,8	38,0	202 K 132	222 K 132
ATX10-14	14	0.812-20 UNEF	25,4	14,3	18,5	38,0	202 K 142	222 K 142
ATX10-16	16	0.937-20 UNEF	30,4	15,9	20,6	38,0	202 K 142	222 K 142
ATX10-18	18	1.062-18 UNEF	33,4	19,1	24,0	38,0	202 K 142	222 K 142
ATX10-20	20	1.187-18 UNEF	36,4	20,6	25,2	38,0	202 K 153	222 K 152
ATX10-22	22	1.312-18 UNEF	40,0	23,8	28,4	38,0	202 K 153	222 K 152
ATX10-24	24	1.437-18 UNEF	43,0	25,4	30,4	38,0	202 K 153	222 K 152

All dimensions are in millimeters (mm). Specifications and dimensions subject to

**TABLE-3 / MATERIAL & SURFACE PLATING CODES**

CODE	PLATING
CA	ALUMINUM & ELECTROLESS NICKEL
AA	ALUMINUM & BLACK ANODIZE
BA	ALUMINUM & CADMIUM OLIVE DRAB OVER ELECTROLESS NICKEL
ZN	ALUMINUM & ZINC NICKEL OLIVE DRAB OVER ELECTROLESS NICKEL
ZA	ALUMINUM & ZINC NICKEL BLACK OVER ELECTROLESS NICKEL
PA	ALUMINUM & CADMIUM OLIVE DRAB OVER ELECTROLESS NICKEL, SELECTIVE PLATING
SS	STAINLESS STEEL SERIES & PASSIVATED
NB	NICKEL ALUMINUM BRONZE SERIES

**TABLE-4 / MODIFICATION CODE**

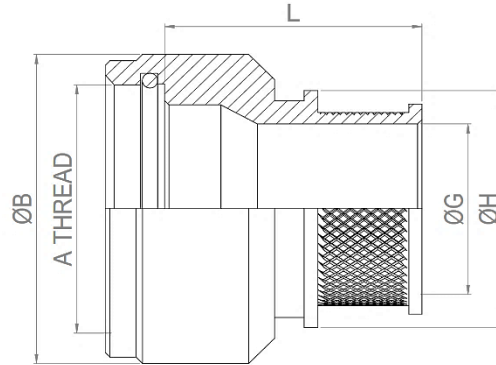
CODE	EXPLANATION
UW	SUPILED WITH SHIELDING TAPE

**TABLE-5 / ADDITION CODE**

CODE	EXPLANATION
H	HEXAGONAL COUPLING NUT
D	DOUBLE SHIELDED



## ATX25-SOLID (FIXED) BACKSHELL



### DESCRIPTION OF THE PART NUMBER

BASIC SERIES	CONNECTOR INTERFACE	SHELL SIZE	MATERIAL & PLATING	MODIFICATION CODE	ADDITION
ATX	25	16	BA		
BASIC CODE	SEE TABLE-1	SEE TABLE-2	SEE TABLE-3	SEE TABLE-4	SEE TABLE-5

**TABLE-1 (SERIES FOR)**

MIL-DTL-26482 SERIES II	MIL-DTL-5015 CRIMP
AS81703 SERIES III	MIL-DTL-83723 SERIES I & III

**TABLE-2 / ATX25 / SHELL SIZE**

BASE PART NUMBER	SHELL SIZE			A THREAD	ØB MAX	ØG MIN	ØH MAX	L MAX	BOOT SIZE	
	MIL-DTL-5015 Crimp	MIL-C-81703 Series III	MIL-DTL-26482 Series II						STRAIGHT	90°
ATX25-03	-	3	-	0.562-24 UNEF	18,0	6,4	19,0	38,0	202 K 121	222 K 121
ATX25-08	8 & 8S	-	8	0.500-20 UNF	16,5	6,4	11,1	38,0	202 K 121	222 K 121
ATX25-10	10, 10S & 10SL	-	10	0.625-24 UNEF	19,5	7,9	12,7	38,0	202 K 121	222 K 121
ATX25-12	12 & 12S	7	12	0.750-20 UNEF	22,6	11,1	15,8	38,0	202 K 132	222 K 132
ATX25-14	14 & 14S	12	14	0.875-20 UNEF	25,8	14,3	18,5	38,0	202 K 142	222 K 142
ATX25-16	16 & 16S	19	16	1.000-20 UNEF	29,1	15,9	20,6	38,0	202 K 142	222 K 142
ATX25-18	18	27	18	1.062-18 UNEF	31,4	19,1	24,0	38,0	202 K 142	222 K 142
ATX25-20	20	37	20	1.187-18 UNEF	34,6	20,6	25,2	38,0	202 K 153	222 K 152
ATX25-22	22	-	22	1.312-18 UNEF	36,5	23,8	28,4	38,0	202 K 153	222 K 152
ATX25-24	24	-	24	1.437-18 UNEF	41,0	25,4	30,4	38,0	202 K 153	222 K 152
ATX25-28	28	-	-	1.750-18 UNS	50,0	28,6	33,5	38,0	202 K 163	222 K 163
ATX25-32	32	-	-	2.000-18 UNS	56,3	33,3	37,9	38,0	202 K 174	222 K 174
ATX25-36	36	-	-	2.250-16 UN	62,6	38,5	42,7	38,0	202 K 185	222 K 185
ATX25-40	40	-	-	2.500-16 UN	69,0	52,0	71,3	38,0	202 K 185	222 K 185
ATX25-44	44	-	-	2.750-16 UN	75,3	58,5	77,3	38,0	202 A 196	222 A 196
ATX25-48	48	-	-	3.000-16 UN	81,7	64,8	84,0	38,0	202 A 196	222 A 196
ATX25-61	-	61	-	1.500-18 UNEF	42,0	30,0	44,3	38,0	202 K 163	222 K 163

All dimensions are in millimeters (mm). Specifications and dimensions subject to change.

**TABLE-3 / MATERIAL & SURFACE PLATING CODES**

CODE	PLATING
CA	ALUMINUM & ELECTROLESS NICKEL
AA	ALUMINUM & BLACK ANODIZE
BA	ALUMINUM & CADMIUM OLIVE DRAB OVER ELECTROLESS NICKEL
ZN	ALUMINUM & ZINC NICKEL OLIVE DRAB OVER ELECTROLESS NICKEL
ZA	ALUMINUM & ZINC NICKEL BLACK OVER ELECTROLESS NICKEL
PA	ALUMINUM & CADMIUM OLIVE DRAB OVER ELECTROLESS NICKEL, SELECTIVE PLATING
SS	STAINLESS STEEL SERIES & PASSIVATED
NB	NICKEL ALUMINUM BRONZE SERIES

**TABLE-4 / MODIFICATION CODE**

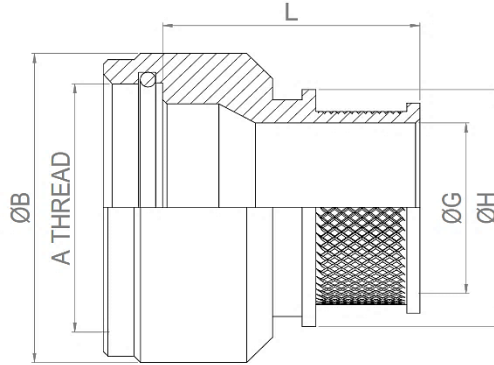
CODE	EXPLANATION
UW	SUPLIED WITH SHIELDING TAPE

**TABLE-5 / ADDITION CODE**

CODE	EXPLANATION
H	HEXAGONAL COUPLING NUT
D	DOUBLE SHIELDED



## ATX30-SOLID (FIXED) BACKSHELL



### DESCRIPTION OF THE PART NUMBER

BASIC SERIES	CONNECTOR INTERFACE	SHELL SIZE	MATERIAL & PLATING	MODIFICATION CODE	ADDITION
ATX	30	17	BA		
BASIC CODE	SEE TABLE-1	SEE TABLE-2	SEE TABLE-3	SEE TABLE-4	SEE TABLE-5

**TABLE-1 (SERIES FOR)**

MIL-DTL-38999 SERIES I & II  
MIL-DTL-27599

**TABLE-2 / ATX30 / SHELL SIZE**

BASE PART NUMBER	SHELL SIZE		A THREAD	ØB MAX	ØG MIN	ØH MAX	L MAX	BOOT SIZE	
	Series I	Series II						STRAIGHT	90°
ATX30-09	9	8	0.437-28 UNEF	17,4	6,4	11,1	38,0	202 K 121	222 K 121
ATX30-11	11	10	0.562-24 UNEF	20,4	7,9	12,7	38,0	202 K 121	222 K 121
ATX30-13	13	12	0.687-24 UNEF	23,4	11,1	15,8	38,0	202 K 132	222 K 132
ATX30-15	15	14	0.812-20 UNEF	25,4	14,3	18,5	38,0	202 K 142	222 K 142
ATX30-17	17	16	0.937-20 UNEF	30,4	15,9	20,6	38,0	202 K 142	222 K 142
ATX30-19	19	18	1.062-18 UNEF	33,4	19,1	24,0	38,0	202 K 142	222 K 142
ATX30-21	21	20	1.187-18 UNEF	36,4	20,6	25,2	38,0	202 K 153	222 K 152
ATX30-23	23	22	1.312-18 UNEF	40,0	23,8	28,4	38,0	202 K 153	222 K 152
ATX30-25	25	24	1.437-18 UNEF	43,0	25,4	30,4	38,0	202 K 153	222 K 152

All dimensions are in millimeters (mm). Specifications and dimensions subject to change.

**TABLE-3 / MATERIAL & SURFACE PLATING CODES**

CODE	PLATING
CA	ALUMINUM & ELECTROLESS NICKEL
AA	ALUMINUM & BLACK ANODIZE
BA	ALUMINUM & CADMIUM OLIVE DRAB OVER ELECTROLESS NICKEL
ZN	ALUMINUM & ZINC NICKEL OLIVE DRAB OVER ELECTROLESS NICKEL
ZA	ALUMINUM & ZINC NICKEL BLACK OVER ELECTROLESS NICKEL
PA	ALUMINUM & CADMIUM OLIVE DRAB OVER ELECTROLESS NICKEL, SELECTIVE PLATING
SS	STAINLESS STEEL SERIES & PASSIVATED
NB	NICKEL ALUMINUM BRONZE SERIES

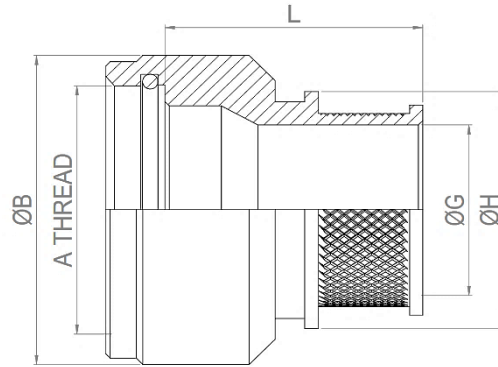
**TABLE-4 / MODIFICATION CODE**

CODE	EXPLANATION
UW	SUPLIED WITH SHIELDING TAPE

**TABLE-5 / ADDITION CODE**

CODE	EXPLANATION
H	HEXAGONAL COUPLING NUT
D	DOUBLE SHIELDED

## ATX35-SOLID (FIXED) BACKSHELL



### DESCRIPTION OF THE PART NUMBER

BASIC SERIES	CONNECTOR INTERFACE	SHELL SIZE	MATERIAL & PLATING	MODIFICATION CODE	ADDITION
ATX	35	17	BA		
BASIC CODE	SEE TABLE-1	SEE TABLE-2	SEE TABLE-3	SEE TABLE-4	SEE TABLE-5

**TABLE-1 (SERIES FOR)**

MIL-DTL-38999 SERIES III & IV  
EN3645

**TABLE-2 / ATX35 / SHELL SIZE**

BASE PART NUMBER	SHELL SIZE	A THREAD	ØB MAX	ØG ±0,15	ØH MAX	L MAX	BOOT SIZE	
							STRAIGHT	90°
ATX35-09	9 / A	M12 x 1,0	19,0	6,4	11,1	38,0	202 K 121	222 K 121
ATX35-11	11 / B	M15 x 1,0	22,2	7,9	12,7	38,0	202 K 121	222 K 121
ATX35-13	13 / C	M18 x 1,0	25,4	11,1	15,8	38,0	202 K 132	222 K 132
ATX35-15	15 / D	M22 x 1,0	30,2	14,3	18,5	38,0	202 K 142	222 K 142
ATX35-17	17 / E	M25 x 1,0	33,2	15,9	20,6	38,0	202 K 142	222 K 142
ATX35-19	19 / F	M28 x 1,0	36,4	19,1	24,0	38,0	202 K 142	222 K 142
ATX35-21	21 / G	M31 x 1,0	38,0	20,6	25,2	38,0	202 K 153	222 K 152
ATX35-23	23 / H	M34 x 1,0	41,2	23,8	28,4	38,0	202 K 153	222 K 152
ATX35-25	25 / J	M37 x 1,0	44,4	25,4	30,4	38,0	202 K 153	222 K 152

All dimensions are in millimeters (mm). Specifications and dimensions subject to change.

**TABLE-3 / MATERIAL & SURFACE PLATING CODES**

CODE	PLATING
CA	ALUMINUM & ELECTROLESS NICKEL
AA	ALUMINUM & BLACK ANODIZE
BA	ALUMINUM & CADMIUM OLIVE DRAB OVER ELECTROLESS NICKEL
ZN	ALUMINUM & ZINC NICKEL OLIVE DRAB OVER ELECTROLESS NICKEL
ZA	ALUMINUM & ZINC NICKEL BLACK OVER ELECTROLESS NICKEL
PA	ALUMINUM & CADMIUM OLIVE DRAB OVER ELECTROLESS NICKEL, SELECTIVE PLATING
SS	STAINLESS STEEL SERIES & PASSIVATED
NB	NICKEL ALUMINUM BRONZE SERIES

**TABLE-4 / MODIFICATION CODE**

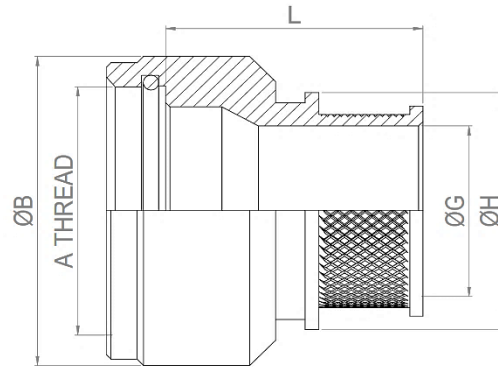
CODE	EXPLANATION
UW	SUPLIED WITH SHIELDING TAPE

**TABLE-5 / ADDITION CODE**

CODE	EXPLANATION
H	HEXAGONAL COUPLING NUT
D	DOUBLE SHIELDED



## ATX50-SOLID (FIXED) BACKSHELL



### DESCRIPTION OF THE PART NUMBER

BASIC SERIES	CONNECTOR INTERFACE	MANUFACTURER CODE	SHELL SIZE	MATERIAL & PLATING	MODIFICATION CODE	ADDITION
ATX	50	C	20	BA		
BASIC CODE	SEE TABLE-1	SEE TABLE-2	SEE TABLE-3	SEE TABLE-4	SEE TABLE-5	SEE TABLE-6

**TABLE-1 (SERIES FOR)**

MIL-DTL-5015 (MS3100)

**TABLE-2 / MANUFACTURER**

MANUFACTURER CODE	CONNECTOR MANUFACTURER
A	AMPHENOL-Class A
B	BENDIX-Class A/E/R
C	CANNON-Class A/E/R
D	UNKOWN-Class A/E/R
R	AMPHENOL-Class R
-	Manufacturer code not required

**TABLE-4 / MATERIAL & SURFACE PLATING CODES**

CODE	PLATING
CA	ALUMINUM & ELECTROLESS NICKEL
AA	ALUMINUM & BLACK ANODIZE
BA	ALUMINUM & CADMIUM OLIVE DRAB OVER ELECTROLESS NICKEL
ZN	ALUMINUM & ZINC NICKEL OLIVE DRAB OVER ELECTROLESS NICKEL
ZA	ALUMINUM & ZINC NICKEL BLACK OVER ELECTROLESS NICKEL
PA	ALUMINUM & CADMIUM OLIVE DRAB OVER ELECTROLESS NICKEL, SELECTIVE PLATING
SS	STAINLESS STEEL SERIES & PASSIVATED
NB	NICKEL ALUMINUM BRONZE SERIES

TABLE-5 / MODIFICATION CODE		TABLE-6 / ADDITION CODE	
CODE	EXPLANATION	CODE	EXPLANATION
UW	SUPLIED WITH SHIELDING TAPE	H	HEXAGONAL COUPLING NUT
		D	DOUBLE SHIELDED

**TABLE-3 / ATX50 / SHELL SIZE**

ORDER NUMBER	SHELL SIZE	MANUFACTURER CODE	A THREAD	ØB MAX	ØG MIN	ØH MAX	L MAX	BOOT SIZE	
								STRAIGHT	90°
08	8S	B	0.375-37 UNEF	16,5	6,35	13,9	38,0	202 K 121	222 K 121
08	8S	C	0.437-28 UNEF	16,5	6,35	13,9	38,0	202 K 121	222 K 121
08	8S	A, R	0.437-27 UNS	16,5	6,35	13,9	38,0	202 K 121	222 K 121
08	8S	D	*	16,5	6,35	13,9	38,0	202 K 121	222 K 121
10	10S	-	0.500-28 UNEF	19,5	7,7	15,5	38,0	202 K 121	222 K 121
10SL	10SL	C	0.562-24 UNEF	19,5	7,7	15,5	38,0	202 K 121	222 K 121
10SL	10SL	A, B, R	0.625-24 UNEF	19,5	7,7	15,5	38,0	202 K 121	222 K 121
10SL	10SL	D	*	19,5	7,7	15,5	38,0	202 K 121	222 K 121
12	12 & 12S	B, C	0.625-24 UNEF	22,6	9,3	17,2	38,0	202 K 132	222 K 132
12	12 & 12S	A, R	0.687-24 UNEF	22,6	9,3	17,2	38,0	202 K 132	222 K 132
12	12 & 12S	D	*	22,6	9,3	17,2	38,0	202 K 132	222 K 132
14	14 & 14S	-	0.750-20 UNEF	25,8	10,6	18,7	38,0	202 K 132	222 K 132
16	16 & 16S	-	0.875-20 UNEF	29,1	13,5	21,9	38,0	202 K 142	222 K 142
18	18	-	1.000-20 UNEF	31,4	14,6	23,5	38,0	202 K 142	222 K 142
20	20	A, B, C	1.125-18 UNEF	34,6	18,5	26,7	38,0	202 K 142	222 K 142
20	20	R	1.125-24 UNS	34,6	18,5	26,7	38,0	202 K 142	222 K 142
20	20	D	*	34,6	18,5	26,7	38,0	202 K 142	222 K 142
22	22	-	1.250-18 UNEF	36,5	20,8	28,3	38,0	202 K 153	222 K 152
24	24	-	1.375-18 UNEF	41,0	24,6	33,1	38,0	202 K 153	222 K 152
28	28	-	1.625-18 UNEF	50,0	27,0	34,7	38,0	202 K 163	222 K 163
32	32	B, C	1.875-16 UN	56,3	33,3	41,1	38,0	202 K 174	222 K 174
32	32	A, R	1.906-18 UN	56,3	33,3	41,1	38,0	202 K 174	222 K 174
32	32	D	*	56,3	33,3	41,1	38,0	202 K 174	222 K 174
36	36	B	2.062-16 UNS	62,6	38,5	45,9	38,0	202 K 185	222 K 185
36	36	R	2.062-20 UNS	62,6	38,5	45,9	38,0	202 K 185	222 K 185
36	36	C	2.125-16 UN	62,6	38,5	45,9	38,0	202 K 185	222 K 185
36	36	A	2.125-18 UNS	62,6	38,5	45,9	38,0	202 K 185	222 K 185
36	36	D	*	62,6	38,5	45,9	38,0	202 K 185	222 K 185
40	40	B	2.312-16 UNS	69,0	42,0	50,8	38,0	202 K 185	222 K 185
40	40	A, C, R	2.375-16 UN	69,0	42,0	50,8	38,0	202 K 185	222 K 185
40	40	D	*	69,0	42,0	50,8	38,0	202 K 185	222 K 185

1) All dimensions are in millimeters (mm). Specifications and dimensions subject to change.

2) **Manufacturer code D (\*)**  
Additional pieces supplied when manufacturer is unknown. All thread sizes for order number apply.



## INFORMATION ABOUT ATX ADAPTER FAMILY & CROSS NUMBER

### SPIN COUPLING SHIELDED BACKSHELL

SERIES FOR	ATP PART NUMBER	POLAMCO SERIES	TYCO-TXR SERIES	TYCO-M SERIES	MILITARY PART NUMBER
❖ MIL-DTL-26482 Series I	ATX16-00	91K1	TXR21**00	206M0	-
	ATX16-45	91K2	TXR21**45	206M1	-
	ATX16-90	91K3	TXR21**90	206M2	-
❖ MIL-DTL-26482 Series I ❖ PATT 105 ❖ PATT 603	ATX76-00	91D1	TXR76**00	-	-
	ATX76-45	91D2	TXR76**45	-	-
	ATX76-90	91D3	TXR76**90	-	-
❖ MIL-DTL-26482 Series II ❖ MIL-DTL-81703 Series I & II ❖ MIL-DTL-5015 Crimp ❖ MIL-DTL-27599	ATX82-00	91A1	TXR54**00	203M0	M85049/82
	ATX82-45	91A2	TXR54**45	203M1	M85049/83
	ATX82-90	91A3	TXR54**90	203M2	M85049/84
❖ MIL-DTL-38999 Series I & II ❖ MIL-DTL-27599	ATX85-00	91F1	TXR41**00	204M0	M85049/85
	ATX85-45	91F2	TXR41**45	204M1	M85049/86
	ATX85-90	91F3	TXR41**90	204M2	M85049/87
❖ MIL-DTL-38999 Series III & IV ❖ EN3645	ATX88-00	91H1	TXR40**00	208M7	M85049/88
	ATX88-45	91H2	TXR40**45	208M8	M85049/89
	ATX88-90	91H3	TXR40**90	208M9	M85049/90
❖ VG96912 Series I	ATX96-00	91SM1	TXR47**00	-	-
	ATX96-45	91SM2	TXR47**45	-	-
	ATX96-90	91SM3	TXR47**90	-	-
❖ MIL-DTL-5015 (MS3100)	ATX5015-00	91L1	TXR18**00	218M7	-
	ATX5015-45	91L2	TXR18**45	218M8	-
	ATX5015-90	91L3	TXR18**90	218M9	-

### SPIN COUPLING UNSHIELDED BACKSHELL

SERIES FOR	ATP PART NUMBER	POLAMCO SERIES	TYCO-TXR SERIES	TYCO-M SERIES	MILITARY PART NUMBER
❖ MIL-DTL-26482 Series I	ATX15	97K1	-	203M9	-
❖ MIL-DTL-26482 Series II ❖ MIL-DTL-81703 Series I & III ❖ MIL-DTL-5015 Crimp ❖ MIL-DTL-83723 Series I & III	ATX60	97A1	-	201M1	M85049/60-1
❖ MIL-DTL-38999 Series I & II ❖ MIL-DTL-27599	ATX62	97F1	-	202M2	M85049/62
❖ MIL-DTL-38999 Series III & IV ❖ EN3645	ATX69	97H1	-	209M4	M85049/69

### SOLID (NON SPIN) BACKSHELL

SERIES FOR	ATP PART NUMBER	POLAMCO SERIES	TYCO-TXR SERIES	TYCO-M SERIES	MILITARY PART NUMBER
❖ MIL-DTL-26482 Series I	ATX10	-	-	-	-
❖ MIL-DTL-26482 Series II ❖ MIL-DTL-81703 Series I & III ❖ MIL-DTL-5015 Crimp ❖ MIL-DTL-83723 Series I & II	ATX25	-	-	201M9	-
❖ MIL-DTL-38999 Series I & II ❖ MIL-DTL-27599	ATX30	-	-	202M1	-
❖ MIL-DTL-38999 Series III & IV ❖ EN3645	ATX35	-	-	209M3	-
❖ MIL-DTL-5015 (MS3100)	ATX50	-	-	-	-





ATP DEFENSE

© 2026

H I G H P E R F O R M A N C E

# BACKSHELLS

“SPRING TERMINATION”



[www.atpsavunma.com](http://www.atpsavunma.com) | [info@atpsavunma.com](mailto:info@atpsavunma.com)